

Attachment A - Freedom Camping Bylaw 2014 - Restricted Areas

Tairua-Pauanui Community Board Area

Outlined below are restricted areas in the Tairua-Pauanui Community Board area, as set out in the Freedom Camping Bylaw 2014 Schedule Two - Restricted Areas.

SCHEDULE TWO: RESTRICTED AREAS FOR FREEDOM CAMPING

A person may freedom camp in a local authority area identified below, only pursuant to the three following restrictions and any further specific restrictions for that area.

1. Vehicles to freedom camp only in the designated area.
2. Departure by 9.00am.
3. Maximum stay of two consecutive nights.

TAIRUA-PAUANUI COMMUNITY BOARD AREA		
<i>Pauanui Waterways Parade Car Parks Formed car parks near the toilet block on Waterways Parade (provides access to Pauanui Waterways Esplanade)</i>	<i>FC_2014_086</i>	
<i>Royal Billy Point Reserve, Pauanui 1A Vista Paku and 110 Tangitarori Lane</i>	<i>FC_2014_087</i>	
<i>South End Reserves, Pauanui Formed car park on south side, 51 Pauanui Beach Road</i>	<i>FC_2014_088</i>	
<i>Tui Terrace and Wharf Road, Tairua</i>	<i>FC_2014_089</i>	
<i>Waitoko Stream Esplanade (Grahams Creek), Tairua Corner of Ocean Beach Road and Manaia Road Causeway</i>	<i>FC_2014_090</i>	
<i>25 Paku Drive, Tairua Formed car parks opposite Tairua Surf Lifesaving Club</i>	<i>FC_2014_091</i>	

SCHEDULE TWO: MAPS OF RESTRICTED AREAS

Freedom Camping Bylaw Areas

-  Prohibited
-  Restricted

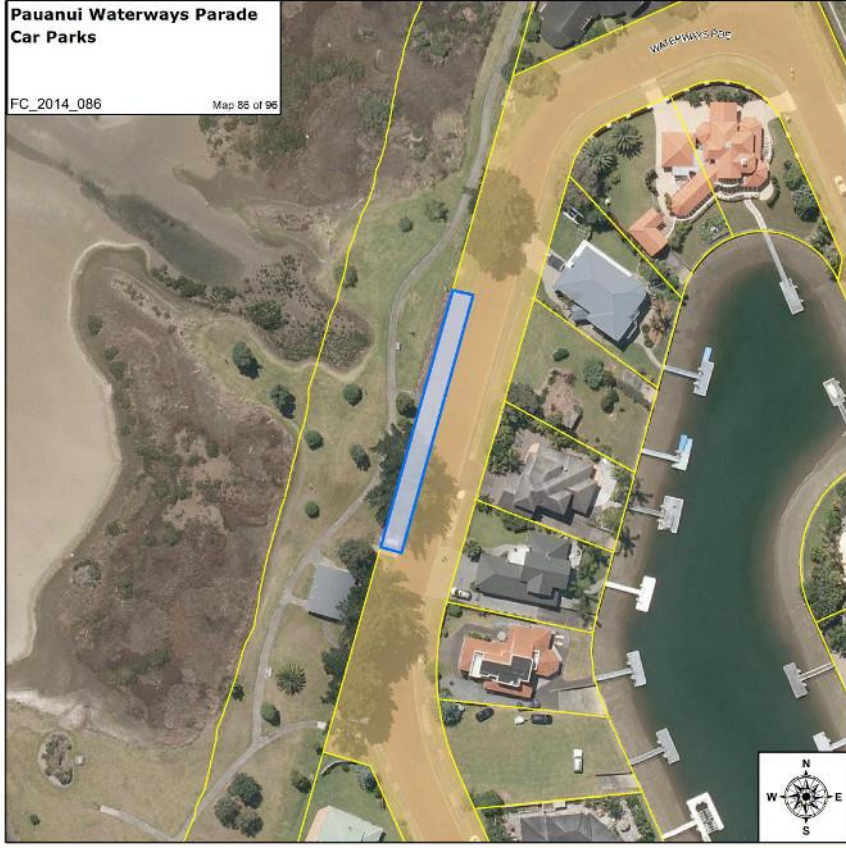
Parcel Boundaries

-  Land Parcels
-  Road Parcels

**Pauanui Waterways Parade
Car Parks**

FC_2014_086

Map 85 of 96



COPYRIGHT RESERVED 2014

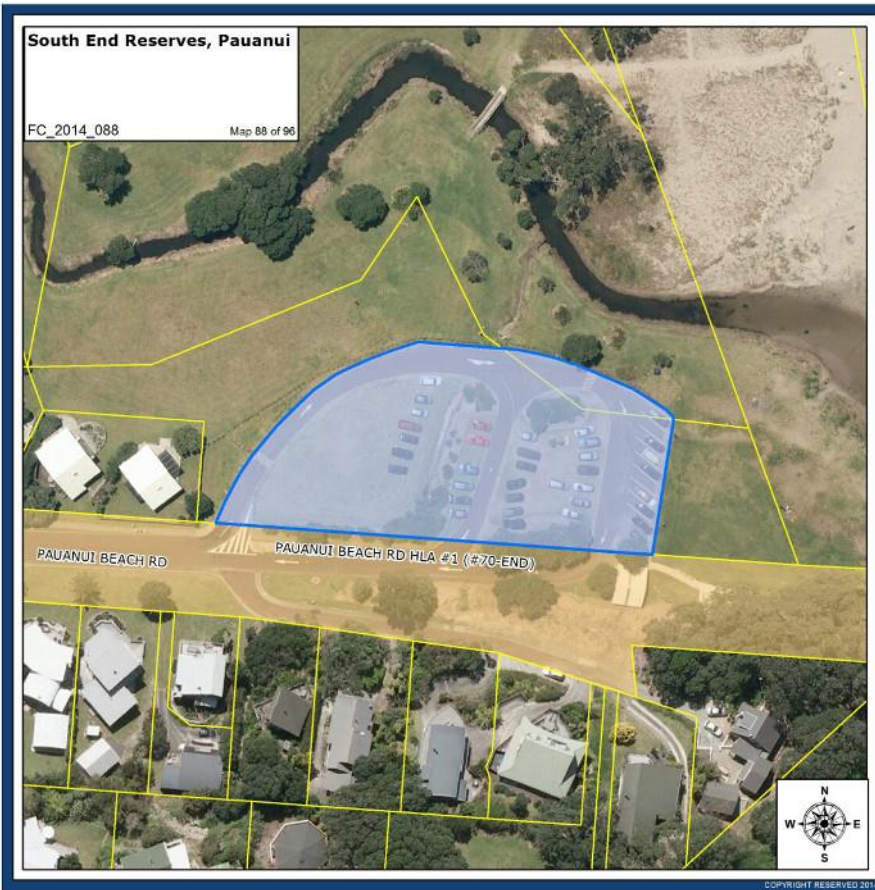
**Royal Billy Point Reserve,
Pauanui**

FC_2014_087

Map 87 of 96



COPYRIGHT RESERVED 2014



**Waitoko Stream Esplanade
(Grahams Creek), Tairua**

FC_2014_090

Map 90 of 96



COPYRIGHT RESERVED 2014

25 Paku Drive, Tairua

FC_2014_091

Map 91 of 96



COPYRIGHT RESERVED 2014