

Attachment A - Freedom Camping Bylaw 2014 - Restricted Areas

Coromandel-Colville Community Board Area

Outlined below are restricted areas in the Coromandel-Colville Community Board area, as set out in the Freedom Camping Bylaw 2014 Schedule Two - Restricted Areas.

SCHEDULE TWO: RESTRICTED AREAS FOR FREEDOM CAMPING

A person may freedom camp in a local authority area identified below, only pursuant to the three following restrictions and any further specific restrictions for that area.

1. Vehicles to freedom camp only in the designated area.
2. Departure by 9.00am.
3. Maximum stay of two consecutive nights.

COROMANDEL-COLVILLE COMMUNITY BOARD AREA	
<i>Carey Road Esplanades and Foreshore Area, Port Charles 147A and 82 Carey Road including foreshore area</i>	<i>FC_2014_073</i>
<i>Kapanga Road, Coromandel All Kapanga Road</i>	<i>FC_2014_074</i>
<i>Little Bay Recreational Reserve 59 Little Bay Drive, Little Bay</i>	<i>FC_2014_075</i>
<i>Woollams Ave, Coromandel All Woollams Ave</i>	<i>FC_2014_076</i>

SCHEDULE TWO: MAPS OF RESTRICTED AREAS

Freedom Camping Bylaw Areas

-  Prohibited
-  Restricted

Parcel Boundaries

-  Land Parcels
-  Road Parcels

Carey Road Esplanades and Foreshore Area, Port Charles

FC_2014_073

Map 73 of 96



COPYRIGHT RESERVED 2014

Kapanga Road, Coromandel

FC_2014_074

Map 74 of 96



COPYRIGHT RESERVED 2014

Little Bay Recreational Reserve

FC_2014_075

Map 75 of 96

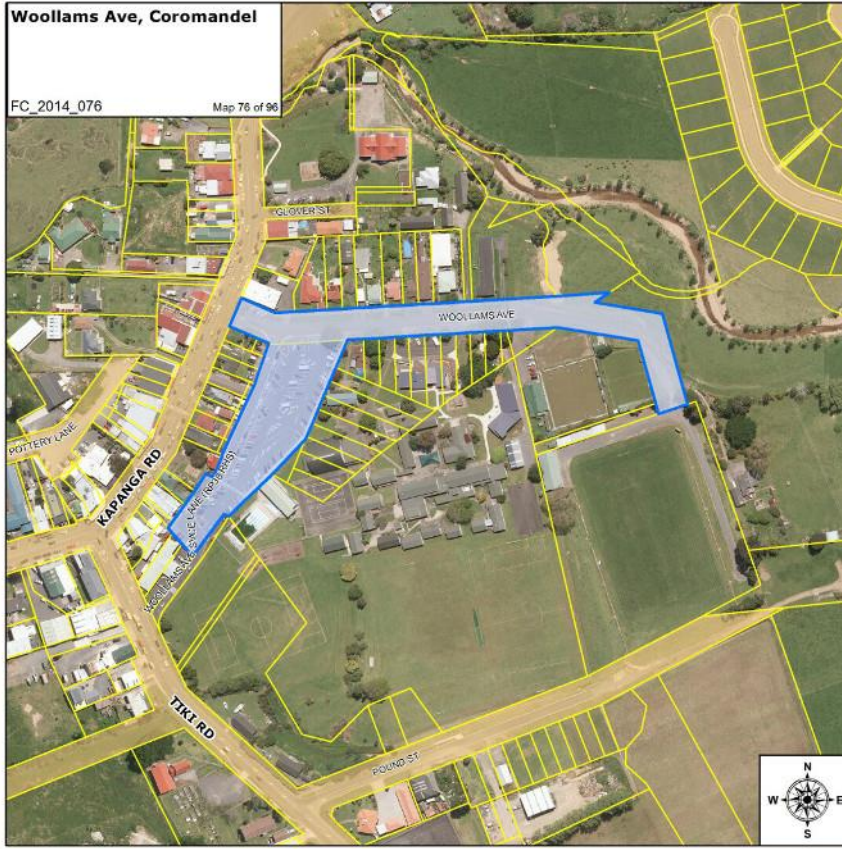


COPYRIGHT RESERVED 2014

Woolams Ave, Coromandel

FC_2014_076

Map 76 of 96



COPYRIGHT RESERVED 2014