

42mm o.d. spigot(150mm long)
 Note: alternative spigot angles/dia.
 available on request.

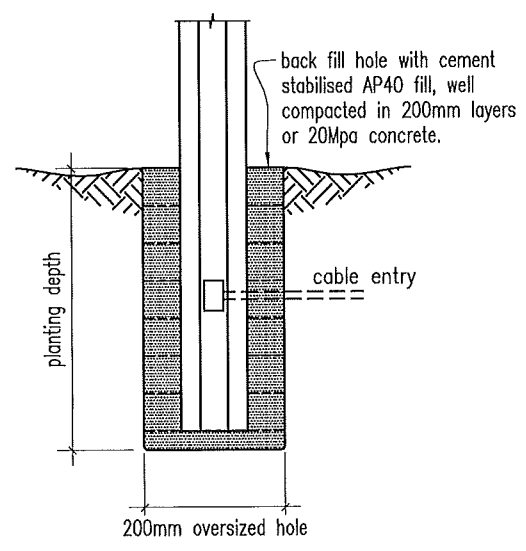
Structural Notes

- Minimum allowable soil bearing pressure shall be 100 kPa.
- Client to provide orientation and location.
- Contractor to check location of all services before commencing work.
- Provide conduit for cable entry as required.
- Only approved light fittings may be used, no additional attachments can be placed on pole without Spunlite's approval. (maximum light size=0.2m² with a cd=1.0, maximum light weight=15kg)
- Back fill hole with cement stabilised AP40 fill well compacted in 200mm layers or concrete.
- All dimensions shown are nominal.

NOTE: Foundation design information is supplied as a guide only. Other solutions may be more appropriate for specific situations. Due to variations in site conditions and installation procedures, Spunlite does not accept legal liability for the use of this information.

If requested Spunlite will design specific foundations for each project. Alternatively Spunlite recommends the engagement of a registered consulting engineer where upon Spunlite will supply all loadings.

A site evaluation by a qualified Structural/Geotechnical Engineer is advisable.



Typical Ground Planted Foundation

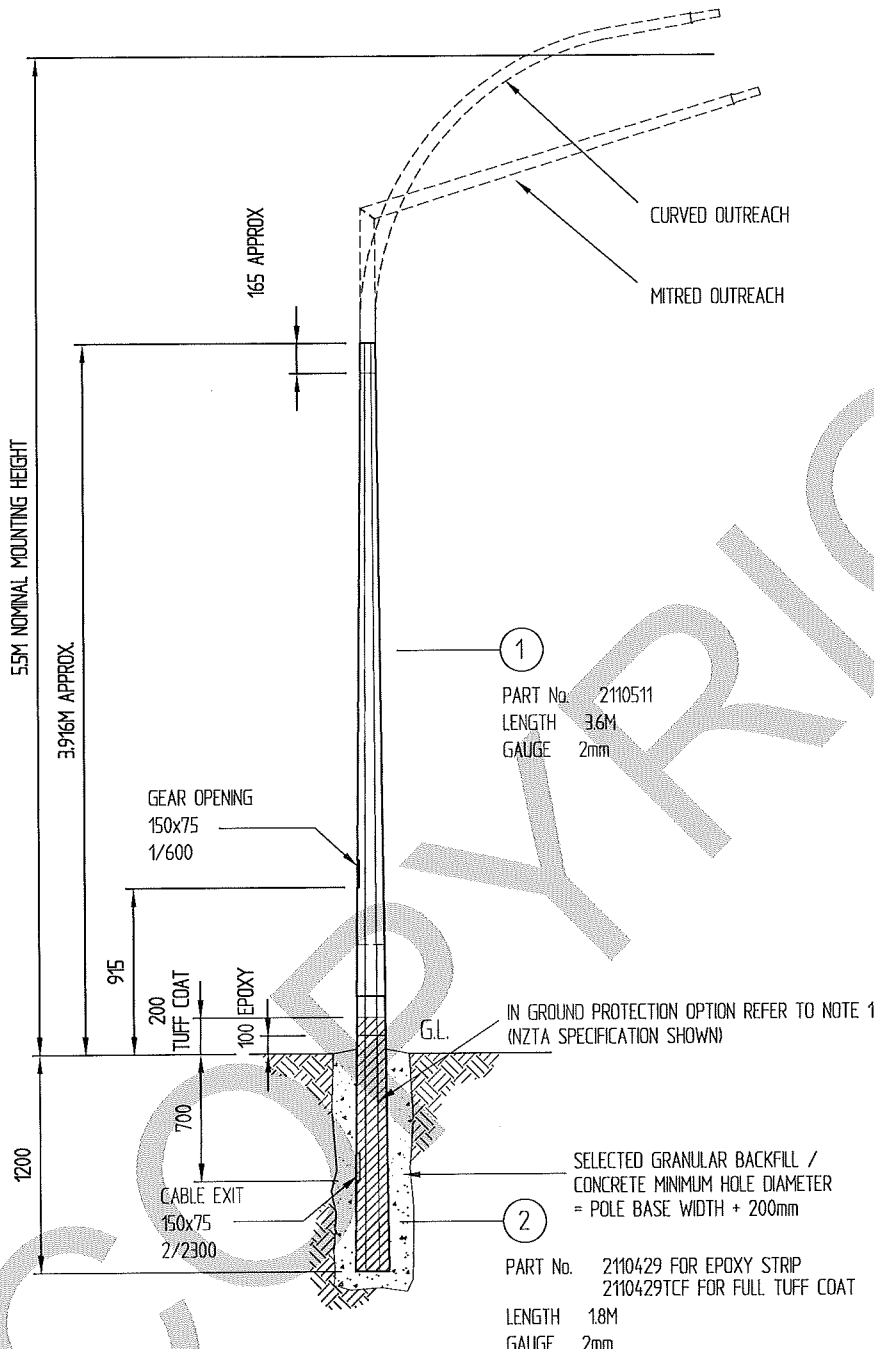
SPUNLITE POLES
 LIMITED
 611 Halswell Junction Rd, Hornby, Christchurch, NZ
 ph(03)349-7853 fax(03)349-6529 freeph(0800)845-845
 i.net www.spunlite.co.nz

Project: -
 Address: -
 Title: Spunlite 4.3m Curved octagonal streetlighting pole, 2.0m
 outreach (10°), ground planted
 Spun Lite Poles Ltd claim authorship of this work & retain intellectual & artistic copyright

scale: 1:40
 file: 4.Jc,gg,2.0,10
 date: 3/12/2009
 drawn: SRC

sheet:
C1
 revision: -

Revision	Rev. Date	Changes Made
Rev.1 (MY)	15/10/12	General note updated



1
 PART No. 2110511
 LENGTH 3.6M
 GAUGE 2mm

2
 PART No. 2110429 FOR EPOXY STRIP
 2110429TCF FOR FULL TUFF COAT
 LENGTH 1.8M
 GAUGE 2mm

NOTES

1. See Installation Instructions for Oclyte™ Columns for assembly and installation - see our web site www.csppacific.co.nz or phone 0800 655 200
2. Foundation design based on cohesive soils "Good ground" as per NZS3604:1999 (typically firm clay)
3. For column foundation in cohesionless soils (sand, gravel) refer to Installation Instructions for Oclyte™ Columns
4. Maximum slope of ground surface within 5m of column base to be 1V:6H
5. No excavations allowed within 3m of column footing without Engineer's approval.
6. Column seam welds to be partial penetration butt welds, Category SP to AS/NZS 1554.1. Use CSP Pacific Welding Procedure #8 for 2mm and #8 or #7 for 3mm sections
7. Steel material - Grade 250 to AS/NZS 3678
8. All other welds to be fillet welds with a min 5mm leg length, Category SP to AS/NZS 1554.1, unless noted otherwise
9. Column design to AS/NZS 1170, AS/NZS 4676 and AS/NZS 3404.1
10. For site specific soil area, base reactions or reduced planting depth information please contact CSP Pacific.
11. Assembly galvanized weight = 40.0 Kg not including outreach.
12. IN GROUND PROTECTION SPECIFICATION IS AS FOLLOWS:
 FOR NZTA COLUMNS-TUFF COAT™ 200mm ABOVE GROUND LEVEL TO THE BASE OF THE COLUMN REFER TO P1737-5 FOR DETAILS
 OTHER COLUMNS- EPOXY PAINT STRIP 100mm ABOVE GROUND LEVEL AND 400mm BELOW GROUND LEVEL REFER TO P1737 FOR DETAILS
13. Column to be hot dip galvanized to AS/NZS 4680:2006



306 Neilson Street,
 Onehunga, Auckland
 PO Box 12 949, Penrose
 Auckland, New Zealand
 Telephone 09-634 1239
 Facsimile 09-634 4525
www.csppacific.co.nz

OCLYTE 5.5M NOMINAL MOUNTING HEIGHT
 GROUND PLANTED STREETLIGHT COLUMN

ASSEMBLY PART No. 2110650/2110650TCF
 (CURVED OUTREACH NOT INCLUDED)

Drawn by	CBT	Date	29/02/00
Checked		Scale	A4 1/40
Reference No.			
Drawing no.	P1590-3	Rev. No.	1

Copyright: This design, information and drawing remain the property of CSP Pacific and may not be used or copied without approval in writing from CSP Pacific.