



# Minutes

of the

## Tairua-Pauanui Community Board

### Ordinary Meeting

Date 27 February 2017  
Venue Pauanui Community Hub Meeting Room  
23 Centre Way  
Pauanui

#### Present

RN Renton (Chairperson)	HD Bartley	WP Brooks
	SH Campbell	BA Turner

#### In Attendance

Name	Item(s)
Garry Towler (Area Manager Whangamata/Tairua-Pauanui)	All items
Lorna Price (Community Co-ordinator Tairua-Pauanui)	All items
Eileen Hopping (Community Development Manager)	All items
Sam Edlin (Roading Engineer)	Items 2.1, 3.1 and 3.2

#### Apologies

TM Walker

Meeting commenced 10:00

## Table of Contents

---

Item Business	Page No.
<b>1 Meeting Conduct</b>	<b>3</b>
1.1 Apologies	3
1.2 Public forum	3
1.3 Items not on the agenda	4
1.4 Conflict of interest	4
1.5 14 November 2016 - Tairua-Pauanui Community Board minutes for confirmation	4
<b>2 Governance</b>	<b>4</b>
2.1 Parking Control Bylaw - Schedule A amendments - Tairua-Pauanui	4
<b>3 Local Activities: Policy/Levels of Service Operational</b>	<b>8</b>
3.1 2016 -2017 Tairua-Pauanui footpath construction	8
3.2 Quarterly roading update	8
3.3 October - December 2016 Quarterly Report - Pauanui Community Library Incorporated	9
<b>4 District Activities: Local Input Policy/Levels of Service</b>	<b>9</b>
4.1 October - December 2016 Thames-Coromandel District Council libraries quarterly report - Thames, Mercury Bay and Tairua Libraries	9
4.2 July - October 2016 Pauanui and Tairua Information Centre reports	9
<b>5 Reports</b>	<b>10</b>
5.1 Tairua-Pauanui Community Board 2016-2017 work programme update report	10
5.2 Members' reports	10

# 1 Meeting Conduct

---

## 1.1 Apologies

### Resolved

That the Tairua-Pauanui Community Board receives the apology from Board member Walker.

**Moved/seconded by:** Renton/Brooks

## 1.2 Public forum

### Pauanui Tairua trail

Andy Bolton, Project Manager for the Hikuai District Trust provided an update on the trail to date and Stage 3. He also noted that they were looking for \$250,000 from a number of external funding sources to push the trail to Hikuai. They hoped to lodge a resource consent for Stage 3 with Waikato Regional Council within the next week. It was noted that In a recent survey held in Pauanui, the trail was a high priority for the community.

### Pauanui Community Plan 2006

Kim Coppersmith on behalf of the Pauanui Ratepayers & Residents Association Incorporated noted that the Pauanui Community Plan 2006 was still relevant today, although a number of actions identified in the plan still needed to be done.

### Pauanui survey

Kim Coppersmith on behalf of the Pauanui Ratepayers & Residents Association Incorporated noted that the Pauanui Tairua Trail, beach erosion, water supply and Royal Billy Point boat ramp were identified with the highest priorities to action from the survey. The community were not asking for lots of projects, only critical ones.

The Ordinary Meeting reconvened at 13:00 to admit members of the public for further public forum due to confusion with the changing of the time of the Tairua-Pauanui Community Board meeting from 13:00 to 10:00.

### Graffiti/wasps

Gordon Coster expressed his concern at not being able to obtain the location for today's meeting from the TCDC web site.

Gordon Coster informed the Board that there was very little graffiti within Pauanui this summer holiday period. He was also seeking help from Council for wasp baits as wasps were becoming a problem in Pauanui or for Council to have staff trained to use baits.

### Tairua Residents & Ratepayers Association Incorporated – goals for 2017

Tony Jacobs on behalf of the Tairua Residents & Ratepayers Association Incorporated noted the Association's goals for 2017 as, progressing the community plan, maintaining the Information Centre in Tairua, footpath across Grahams Stream next to the SH traffic bridge, safety signage at the two crossing points in town, focus on the safety aspects of the one lane bridges until these are replaced, tourism in our communities and the wellbeing of the Tairua harbour.

01/17 **Resolved**

TPCB That the Tairua-Pauanui Community Board receives the speakers in public forum.

**Moved/seconded by:** Brooks/Campbell

### 1.3 Items not on the agenda

No further items were added to the agenda.

### 1.4 Conflict of interest

No conflict of interests were declared.

### 1.5 14 November 2016 - Tairua-Pauanui Community Board minutes for confirmation

02/17 **Resolved**

TPCB That the Tairua-Pauanui Community Board confirms the minutes of the Tairua-Pauanui Community Board meeting held on 14 November 2016 as a correct record of proceedings.

**Moved/seconded by:** Turner/Campbell

## 2 Governance

---

### 2.1 Parking Control Bylaw - Schedule A amendments - Tairua-Pauanui

The Community Board considered amendments to local parking controls in the Tairua-Pauanui Community Board area as set out in Schedule A of Council's Parking Control Bylaw 2014, and determined to recommend to Council that applicable amendments be made.

#### Key discussion points:

- Concern was expressed with the inclusion of six car parks on the northern side of the Tokoroa Road car park as this area was where trucks unloaded. It was suggested that three of these car parks could be converted to a loading zone leaving 3 angle car parks along the north side of the car park.
- It was considered that only one reserved car park beside the Mary Beach boat ramp was required, not two as recommended.

03/17 **Resolved**

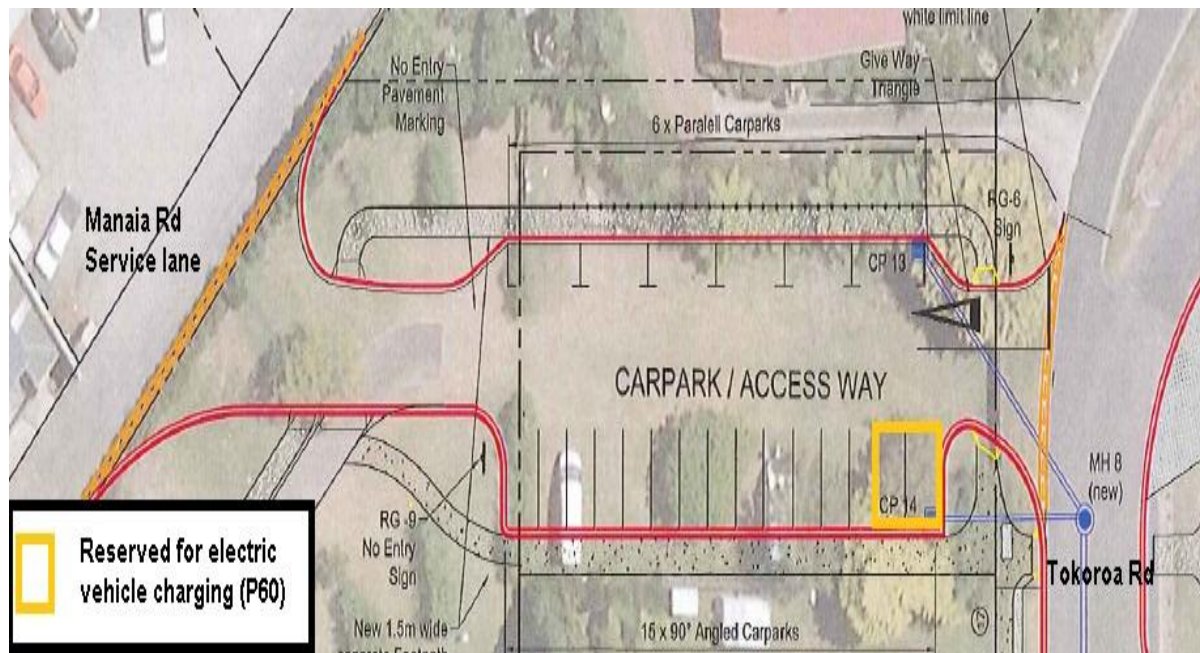
TPCB That the Tairua-Pauanui Community Board:

1. Receives the Parking Control Bylaw - Schedule A Amendments - Tairua-Pauanui Report dated 23 January 2017.
2. Approves the recommended amendments to Schedule A of Council's Parking Control Bylaw 2014 for Tairua-Pauanui as set out in Table 2 and Diagrams 1 to 3.
3. Recommends Council approve the following amendments to Schedule A and Diagrams 1 - 3 of Council's Parking Control Bylaw 2014.

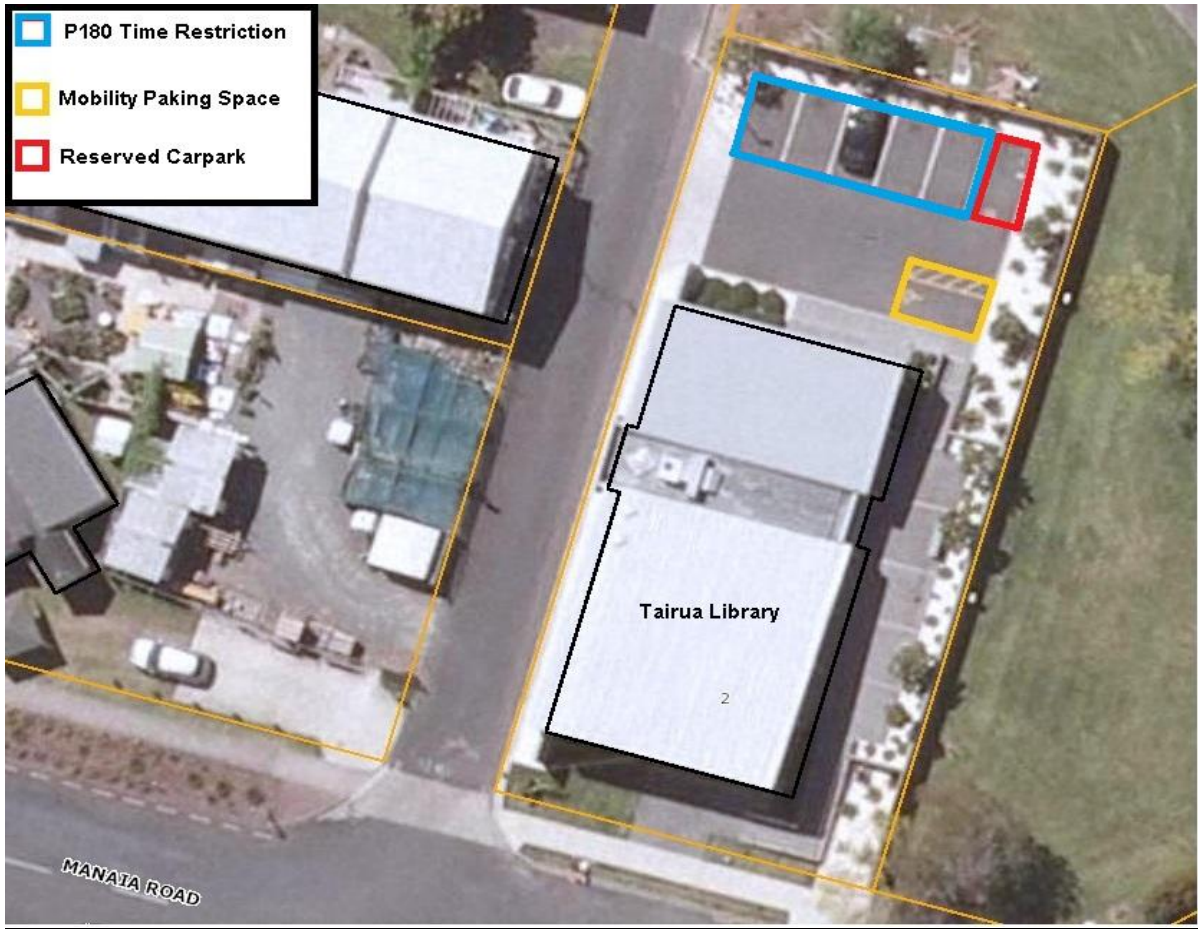
**Table 2: Items recommended to be added to Schedule A - Parking Restrictions (i.e. no stopping areas, mobility carparks, bus parks and loading zones):**

Settlement	Road Name	Road Start Location	Nearest Intersection	Distance (m) from nearest intersection	Restriction Length (m)	Side	TYPE
TAIRUA	TAIRUA TCE	PAKU DR	PAKU DR	306	50	RIGHT	NO STOPPING
TAIRUA	TAIRUA TCE	PAKU DR	PAKU DR	306	50	LEFT	NO STOPPING
TAIRUA	WHARF RD (TAIRUA)	SH 25	PETLEY PDE (POWER BOX LHS)	94	3	RIGHT	RESERVED PARKING
TAIRUA	MANAIA RD SERVICE LANE (RP53 LHS)	<del>MANAIA RD</del> START (NORTH)	START (NORTH)	13	24	LEFT	NO STOPPING
TAIRUA	MANAIA RD SERVICE LANE (RP53 LHS)	<del>MANAIA RD</del> START (NORTH)	TOKOROA RD SERVICE LANE	56	68	LEFT	NO STOPPING
TAIRUA	TOKOROA RD SERVICE LANE (RP84 LHS)	TOKOROA RD	TOKOROA RD	7	<del>65</del> -14	RIGHT	NO STOPPING
TAIRUA	TOKOROA RD SERVICE LANE (RP84 LHS)	TOKOROA RD	TOKOROA RD	54	9	RIGHT	NO STOPPING

**Diagram 1: Tokoroa Road Carpark Electric Vehicle charging carparks:**



**Diagram 2: Tairua Library Carpark**



**Diagram 3: Royal Billy Point Carpark**



Moved/seconded by: Turner/Brooks

### 3 Local activities: Policy/levels of service operational

---

#### 3.1 2016 -2017 Tairua-Pauanui footpath construction

The Tairua-Pauanui Community Board confirmed their 2016/17 footpath construction work programme.

##### Key discussion points

- Concern was expressed at the construction of the short length of footpath in Ocean Beach Road. It was noted that long term and as budget became available it was intended for the Ocean Beach Road footpath to link to Paku Drive at the Manaia Road causeway.
- It was considered essential that the Paku Drive surf club crossing point be constructed before next summer.
- The Paku Drive boardwalk was to be put on hold but the existing footpath should be extended closer to the pohutukawa tree on both sides of the tree.

04/17 **Resolved**

TPCB That the Tairua-Pauanui Community Board:

1. Receives the 2016-2017 Tairua-Pauanui Footpath Construction' report, dated 7 February 2017.
2. Instructs staff to progress the construction of the Paku Drive surf club crossing point site and extend the existing footpath on both sides of the pohutukawa tree in Paku Drive closer to the tree this financial year.

**Moved/seconded by:** Turner/Brooks

#### 3.2 Quarterly roading update

An update was provided to the Community Board on progress of key roading activities for the 2016/17 financial year.

##### Key discussion points

- It was noted that the Tairua Main street bund between the traffic lane and angle carparks could be road painted with white hatching lines to make it more visible to drivers.
- Concerns were expressed at the level of road noise of the Main Road reseal and the height of seal at some driveways. A letter was to be written to Broad Spectrum pointing out the community concerns.

05/17 **Resolved**

TPCB That the Tairua-Pauanui Community Board:

1. Receives the 'Quarterly Roding Update' report, dated 7 February 2017.
2. Instructs staff to write a letter to Broad Spectrum noting the public's concerns with regard to the level of road noise and the height of the seal on Main Road, Tairua since the resealing took place.

**Moved/seconded by:** Campbell/Brooks



### **3.3 October - December 2016 Quarterly Report - Pauanui Community Library Incorporated**

The Tairua-Pauanui Community Board received the quarterly performance results for the Pauanui Community Library for the months of October, November and December 2016.

#### **Key discussion points**

- The operation of the Pauanui Community Library works well with volunteers.

**06/17 Resolved**

**TPCB** That the Tairua-Pauanui Community Board:

1. Receives the 'October-December 2016 Quarterly Report - Pauanui Community Library Incorporated' report, dated 20 January 2017.

**Moved/seconded by:** Campbell/Turner

## **4 District activities: Local input policy/levels of service**

---

### **4.1 October - December 2016 Thames-Coromandel District Council libraries quarterly report - Thames, Mercury Bay and Tairua Libraries**

The activities and performance of the district libraries (Thames, Mercury Bay and Tairua) for October, November and December 2016 were reported on.

#### **Key discussion point**

- The Board continued to raise concerns over the recharges to the Tairua Library.

**07/17 Resolved**

**TPCB** That the Tairua-Pauanui Community Board receives the 'October-December 2016 District Libraries Quarterly' report, dated 5 January 2017.

**Moved/seconded by:** Brooks/Campbell

### **4.2 July - October 2016 Pauanui and Tairua Information Centre reports**

The Tairua-Pauanui Community Board was presented with the Service Level Agreement reports for the Pauanui Information Centre and Tairua Information Centre for the period 1 July to 30 October 2016.

**08/17 Resolved**

**TPCB** That the Tairua-Pauanui Community Board receives the 'July-October Information Centre' report, dated 3 February 2017.

**Moved/seconded by:** Campbell/Brooks

## 5 Reports

---

### 5.1 Tairua-Pauanui Community Board 2016-2017 work programme update report

An update was provided to the Community Board on the 2016/2017 Work Programme.

#### Key Discussion Point

- Pauanui Tairua trail (Hikuai District Trust) should be included in the Work Programme.

#### 09/17 Resolved

TPCB That the Tairua-Pauanui Community Board receives the '2016/2017 Work Programme Update' report, dated 1 February 2017.

**Moved/seconded by:** Brooks/Campbell

### 5.2 Members' reports

#### Board member Campbell

- Was currently compiling a report on the condition of the Pauanui tennis courts for the next meeting.
- Attended Experience Pauanui meeting
  - Music in the Park 11<sup>th</sup> March
  - Purchased a barge for annual New Year's eve fireworks display. A portion of the donations received were going towards paying for this.
  - Promoting weddings in the town.

#### Board member Brooks

- Tairua Information Centre: He was not receiving invitations to attend the meetings in his role as liaison representative.
- Tairua Hall Committee: Looking to replace defibrillator kept in the Hall.

#### Board member Turner

- Attended Tairua Residents & Ratepayers meeting. They were wanting signs installed at the southern crossing point for pedestrian safety.
- He had lodged a number of RFS issues which had been addressed.

#### Board member Renton

- Spent time at the Pauanui Expo in January talking with community members.
- Policing of the liquor ban not the same as in other years.
- The dog bylaw enforcement not as good as previous years.
- Attended Tairua Resident & Ratepayers Association AGM. Main issues were:
  - Two lane bridges
  - Tairua Information Centre
  - Increased road noise from the resealing of the Main Road.
- Pauanui Ratepayers & Residents Association want to progress some of the projects that had been deferred.
  - Pauanui Tairua trail. Hikuai District Trust had some issues to address.
  - Mangroves. Waikato Regional Council to prepare a detailed budget report with options for consideration to present to the Community Board at their next workshop meeting.

- There was some concern with the sand build up in the Tairua River at Hikuai.

**Meeting adjourned at 12:31**

Meeting reconvened at 13:00 for further public forum.

**10/17 Resolved**

**TPCB** That the Tairua-Pauanui Community Board reconvene the meeting at 13:00 for further public forum.

**Moved/seconded by:** Turner/Brooks

**Meeting closed at 13:25**

The foregoing minutes were certified as being a correct record of the proceedings of the Tairua-Pauanui Community Board meeting held on 27 February 2017.

**Chairperson** \_\_\_\_\_ **Date** \_\_\_\_\_