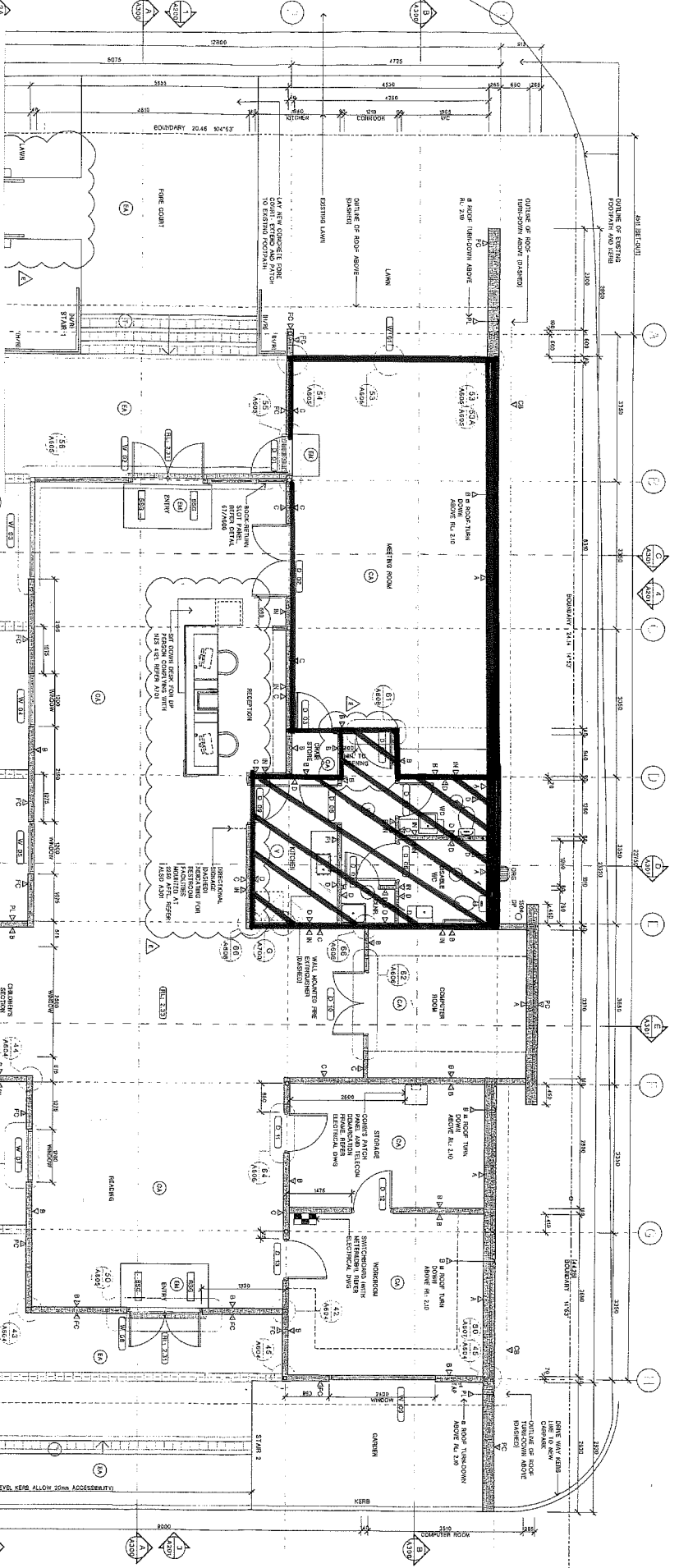
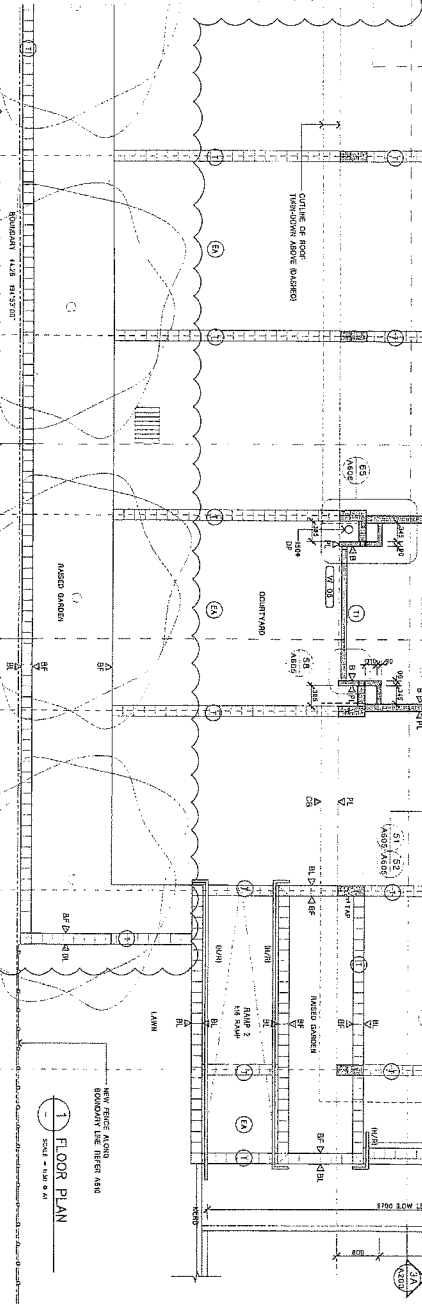
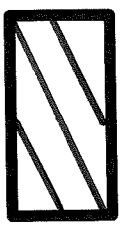


- 1. REFER TO SPECIFICATION FOR FINISH SCHEDULE FOR PARTIAL DETAILS
- 2. REFER TO SPECIFICATION FOR FINISH SCHEDULE FOR PARTIAL DETAILS
- 3. REFER TO SPECIFICATION FOR FINISH SCHEDULE FOR PARTIAL DETAILS
- 4. REFER TO SPECIFICATION FOR FINISH SCHEDULE FOR PARTIAL DETAILS
- 5. REFER TO SPECIFICATION FOR FINISH SCHEDULE FOR PARTIAL DETAILS
- 6. REFER TO SPECIFICATION FOR FINISH SCHEDULE FOR PARTIAL DETAILS
- 7. REFER TO SPECIFICATION FOR FINISH SCHEDULE FOR PARTIAL DETAILS
- 8. REFER TO SPECIFICATION FOR FINISH SCHEDULE FOR PARTIAL DETAILS
- 9. REFER TO SPECIFICATION FOR FINISH SCHEDULE FOR PARTIAL DETAILS
- 10. REFER TO SPECIFICATION FOR FINISH SCHEDULE FOR PARTIAL DETAILS
- 11. REFER TO SPECIFICATION FOR FINISH SCHEDULE FOR PARTIAL DETAILS
- 12. REFER TO SPECIFICATION FOR FINISH SCHEDULE FOR PARTIAL DETAILS
- 13. REFER TO SPECIFICATION FOR FINISH SCHEDULE FOR PARTIAL DETAILS
- 14. REFER TO SPECIFICATION FOR FINISH SCHEDULE FOR PARTIAL DETAILS
- 15. REFER TO SPECIFICATION FOR FINISH SCHEDULE FOR PARTIAL DETAILS
- 16. REFER TO SPECIFICATION FOR FINISH SCHEDULE FOR PARTIAL DETAILS
- 17. REFER TO SPECIFICATION FOR FINISH SCHEDULE FOR PARTIAL DETAILS
- 18. REFER TO SPECIFICATION FOR FINISH SCHEDULE FOR PARTIAL DETAILS
- 19. REFER TO SPECIFICATION FOR FINISH SCHEDULE FOR PARTIAL DETAILS
- 20. REFER TO SPECIFICATION FOR FINISH SCHEDULE FOR PARTIAL DETAILS

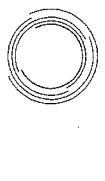


Tairua Information Centre - Lease Area

Tairua Information Centre - Shared Area



- ### GENERAL NOTES
1. ALL WORK TO BE DONE WITHIN THE TIME FRAME OF THE PROJECT AND TO BE COMPLETED BY THE DATE SPECIFIED IN THE PROGRAMME OF WORK.
 2. ALL WORK TO BE DONE IN ACCORDANCE WITH THE RELEVANT BUILDING REGULATIONS AND STANDARDS.
 3. ALL WORK TO BE DONE IN ACCORDANCE WITH THE RELEVANT BUILDING REGULATIONS AND STANDARDS.
 4. ALL WORK TO BE DONE IN ACCORDANCE WITH THE RELEVANT BUILDING REGULATIONS AND STANDARDS.
 5. ALL WORK TO BE DONE IN ACCORDANCE WITH THE RELEVANT BUILDING REGULATIONS AND STANDARDS.
 6. ALL WORK TO BE DONE IN ACCORDANCE WITH THE RELEVANT BUILDING REGULATIONS AND STANDARDS.
 7. ALL WORK TO BE DONE IN ACCORDANCE WITH THE RELEVANT BUILDING REGULATIONS AND STANDARDS.
 8. ALL WORK TO BE DONE IN ACCORDANCE WITH THE RELEVANT BUILDING REGULATIONS AND STANDARDS.
 9. ALL WORK TO BE DONE IN ACCORDANCE WITH THE RELEVANT BUILDING REGULATIONS AND STANDARDS.
 10. ALL WORK TO BE DONE IN ACCORDANCE WITH THE RELEVANT BUILDING REGULATIONS AND STANDARDS.
 11. ALL WORK TO BE DONE IN ACCORDANCE WITH THE RELEVANT BUILDING REGULATIONS AND STANDARDS.
 12. ALL WORK TO BE DONE IN ACCORDANCE WITH THE RELEVANT BUILDING REGULATIONS AND STANDARDS.
 13. ALL WORK TO BE DONE IN ACCORDANCE WITH THE RELEVANT BUILDING REGULATIONS AND STANDARDS.
 14. ALL WORK TO BE DONE IN ACCORDANCE WITH THE RELEVANT BUILDING REGULATIONS AND STANDARDS.
 15. ALL WORK TO BE DONE IN ACCORDANCE WITH THE RELEVANT BUILDING REGULATIONS AND STANDARDS.
 16. ALL WORK TO BE DONE IN ACCORDANCE WITH THE RELEVANT BUILDING REGULATIONS AND STANDARDS.
 17. ALL WORK TO BE DONE IN ACCORDANCE WITH THE RELEVANT BUILDING REGULATIONS AND STANDARDS.
 18. ALL WORK TO BE DONE IN ACCORDANCE WITH THE RELEVANT BUILDING REGULATIONS AND STANDARDS.
 19. ALL WORK TO BE DONE IN ACCORDANCE WITH THE RELEVANT BUILDING REGULATIONS AND STANDARDS.
 20. ALL WORK TO BE DONE IN ACCORDANCE WITH THE RELEVANT BUILDING REGULATIONS AND STANDARDS.



asc architect

SITE 1, 30 ST BRUNNERS ST, TAIKOA, AUCKLAND
 NEW ZEALAND
 TEL: +64 9 271 2222 F: +64 9 271 2222

NO	REVISION	DATE
001	ISSUED	16/01/11
002	DESIGN	07/02/11
003	CHECKED	16/02/11
004	QAD REV	16/02/11

TAIRUA LIBRARY
 Tairua Community Centre
 1, 30 Brunners Street
 Tairua, Bay of Plenty
 New Zealand

FLOOR PLAN

SCALE: ORIGINAL A1 200 MM
 1:50
 SHEET NO. A100
 REV. E