

Parking Control Bylaw Schedule A Amendments

TO	Thames Community Board
FROM	Sam Edlin - Roading Engineer
DATE	23 October 2018
SUBJECT	Parking Control Bylaw Schedule A Amendments

1 Purpose of Report

For the Community Board to review and agree to the proposed parking control bylaw amendments in Thames and recommend to Council that the proposed parking control bylaw amendments are approved.

2 Background

Council's Parking Control Bylaw was reviewed in 2014 and Council adopted a revised bylaw at its meeting on 19 November 2014. Amendments can be made to the bylaw Schedule A (local parking controls) by Council resolution.

3 Issue

A number of issues and/or requests have been raised recently in relation to local parking controls set out in Schedule A of the bylaw. Amendments may be made to Schedule A to address the matters raised, if and as considered appropriate. The Thames Community Board should consider the matters and if amendments are considered appropriate, then make a recommendation to Council to resolve to amend Schedule A accordingly.

There are three issue areas/requested changes that have been raised in the Thames Community Board area since the last parking control bylaw amendment in July 2018 as detailed in Table 1 and diagrams 1, 2 and 3 below.

The issues are explained below, including the applicable parking control(s) as currently specified in Schedule A of the bylaw, who raised the issue/requested change, reason for requested change, and staff comment/advice.

Table 1:

Issue / requested change	Reason for change	Staff comment / advice
Outside No.65,67 and 69 Waiomu Valley Road, Waiomu: Install no stopping lines	To prevent vehicles parking around inside of corner on a narrow road which cause a safety issue for road users.	Staff recommend that this no stopping line is installed for the following reasons: <ul style="list-style-type: none"> • Sight distance around this corner (shown in diagram 1) is limited due to privately grown vegetation on the inside of the corner. • Staff will discuss vegetation control with the resident, but even with trimming, the road is still narrow, so no-stopping lines are recommended. • Large number of visitors to the Waiomu Valley Kauri walk, who may not be aware of the tendency for people to park around this corner.
Pakura Close, Kopu: Install no stopping lines at three locations.	To prevent vehicles parking at three locations around the Pakura Close cul-de-sac which affects Hauraki Rail trail users access to the trails.	Staff recommend that no stopping lines as shown in diagram 2 are installed around the Pakura Close cul-de-sac to maintain cyclist access to the Hauraki Rail trail.
Outside the Hospice shop Pollen Street, Thames: Remove angle carpark and yellow hatch where fire hydrant is located.	Fire hydrant located in middle of angle carpark. Carpark to be hatched as a no stopping area to provide access to fire hydrant.	Staff recommend that the angle carpark in question removed and is hatched in yellow as shown in diagram 3 to provide access to the fire hydrant.

Diagram 1: Waiomu Valley Road - Proposed new no stopping lines

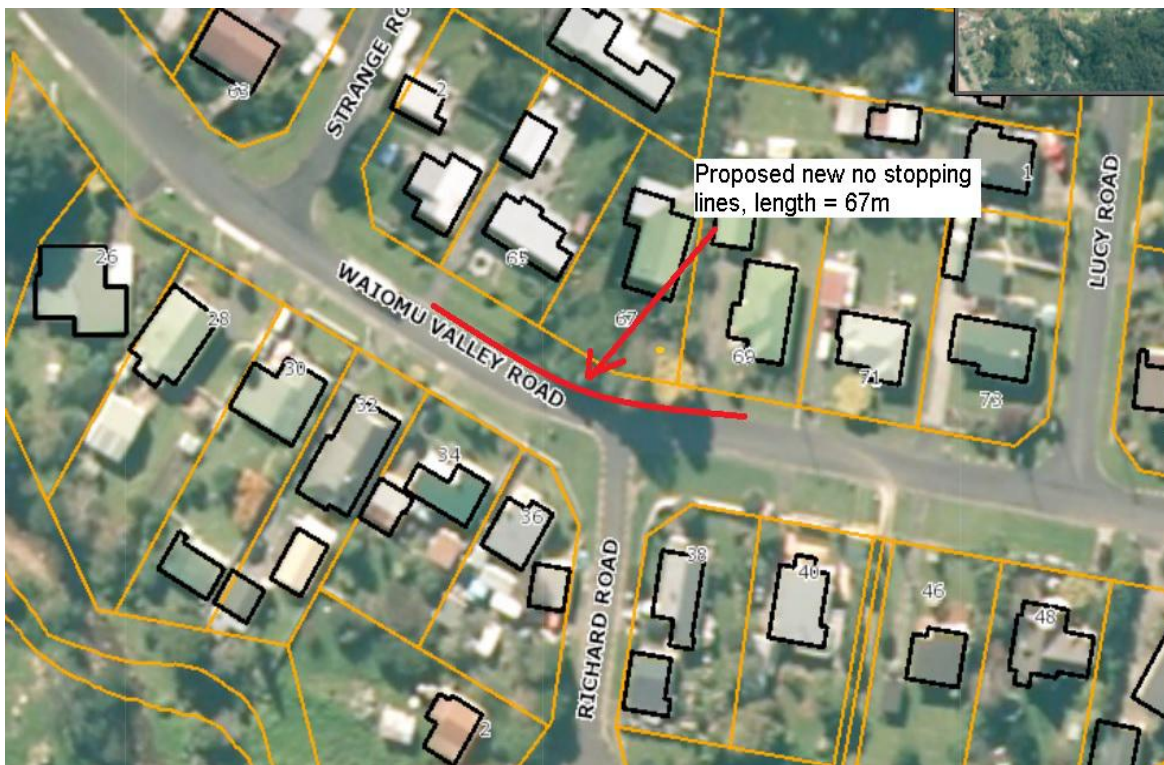
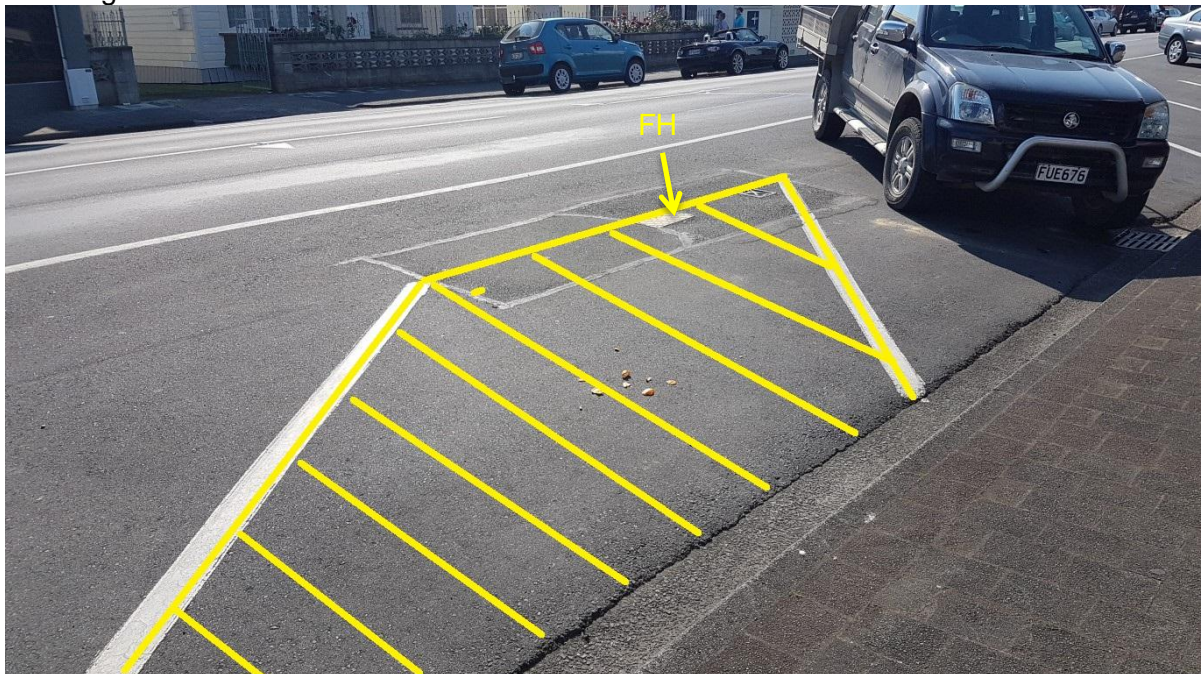


Diagram 2: Pakura Close - Proposed new no stopping lines



Diagram 3: Pollen Street - Proposed removal of angle carpark and installation of yellow hatching.



4 Discussion

Table 2 and 3 below details the recommended amendments to Schedule A of Council's Parking Control Bylaw 2014, in the form set out in Schedule A of the bylaw with recommended amendments identified by heading and/or tracked changes.

Table 2: Items proposed to be added to schedule A - Parking Restrictions (i.e. no stopping areas, mobility carparks, bus parks and loading zones):

Settlement	Road Name	Road Start Location	Nearest Intersection	Distance (m) from nearest intersection	Restriction Length (m)	Side	Type	Comments
WAIOMU	WAIOMU VALLEY RD	WEST END	POLLEN ST	92	8	LEFT	NO STOPPING	Addition to parking control bylaw schedule A required to prevent vehicles parking in unsafe locations.
KOPU	PAKURA CLOSE	KOPU RD	KOPU RD	120	12	LEFT	NO STOPPING	
KOPU	PAKURA CLOSE	KOPU RD	KOPU RD	166	5	LEFT	NO STOPPING	
KOPU	PAKURA CLOSE	KOPU RD	KOPU RD	159	7	RIGHT	NO STOPPING	
THAMES	POLLEN STREET	SH25	RICHMOND ST	23	3	RIGHT	NO STOPPING (HATCHED)	

Table 3: Items proposed to be amended in schedule A - Parking Time Restrictions:

Settlement	Road Name	Road Start Location	Nearest Intersection	Distance (m) from nearest intersection	Side	Direction (m) Indicated	Restriction	Comments
THAMES	POLLEN ST	SH25	RICHMOND ST	24 ²⁷	RIGHT	LEFT	P120 + 8.00AM-6.00PM + MON TO FRI	Adjustment to parking time restriction start location to allow for removal of angle carpark outside hospice shop where fire hydrant is located.

5 Suggested Resolution(s)

That the Thames Community Board:

1. Receives the Parking Control Bylaw Schedule A Amendments report, dated 23 October 2019.
2. Reviews and agrees to the proposed amendments to Schedule A of the parking control bylaw.
3. Recommends that Council approves the proposed amendments to Schedule A of the parking control bylaw.