

Coromandel/Colville Ward Reserve Management Plan

Reserves Act 1977



May 2007

This draft Reserves Management Plan has been prepared by the Thames Coromandel District Council (the Council) under the provisions of the Reserves Act 1977 Section 41. The plan is separated into two documents, as follows:

Document 1

Introduction to Reserve Management Plan

- Section 1 Provides a brief introduction to the Coromandel and Colville areas.
- Section 2 Identifies the requirement of the Reserves Act for Council to prepare management plans, and how the community can become involved in the development of this plan.

Aims, Objectives and Policies

- Section 3 Landscape and natural values.
- Section 4 Recreation and leisure, focusing on; general recreation, organised sport, restricted activities, prohibited activities, and special use activities such as leases and licences.
- Section 5 Recreation and leisure, with a focus on the provision of facilities for sport and recreation users.
- Section 6 Tourism and economic development.
- Section 7 Management and co-operation – how Council will work with neighbours, volunteer groups and Maori on reserve issues.
- Section 8 Monitoring of management plan – how and when this plan will be kept under continuous review.

Appendices

Document 2

Reserve Plans

- Section 9 Individual Reserve Plans – identifying particular reserves, (their acquisition and history) and any proposed development.
- Section 10 Other reserves not identified within Section 9.

Table of Contents

SECTION 1: PURPOSE OF THIS PLAN.....	5	Section 4D - Prohibited Activities	23
1.1 Reserve Management Plan Requirements.....	5	4.10 Prohibited Activities	23
Overview of Reserve Plan Area	3	Section 4E - Recreation and Leisure – Concessionaires: Leases, Licenses and	24
Coromandel Reserves	4	Permits.....	24
Colville District Reserves	4	Definitions	24
SECTION 2: RESERVE MANAGEMENT PLAN PROCESS	5	4.11 Leases, Licences and Permits	24
2.1 Reserve Act Classifications	5	4.12 Charges for Leases / Licenses or Permits on Reserve Land	27
2.2 Community Consultation	8	4.13 Liquor Licences.....	27
SECTION 3: LANDSCAPE AND NATURAL VALUES	11	SECTION 5 - RECREATION, LEISURE AND SPORT FACILITIES.....	28
3.1 Amenity Values – Trees, Shrubs and Gardens	11	5.1 Buildings and Structures	28
3.2 Cultural Significance.....	13	5.2 Development.....	28
3.3 Ecosystems	14	5.3 Fences	29
3.4 Fire	15	5.4 Land, Gifts, and Commemorative Features.....	30
3.5 Flora and Fauna	15	5.5 Lighting	31
3.6 Landscape.....	16	5.6 Naming of Reserves	31
3.7 Plant and Animal Pests	16	5.7 Parking: Boat ramps	32
3.8 Natural Hazards	17	5.8 Parking: Vehicles	32
SECTION 4: RECREATION AND LEISURE	18	5.9 Playgrounds.....	33
Section 4A - General Use.....	18	5.10 Public Toilets and Changing Facilities	33
4.1 General Recreation – Use of Reserves.....	18	5.11 Reserve Furniture	34
4.2 Access.....	19	5.12 Sporting needs.....	34
4.3 Alcohol.....	19	5.13 Utilities / Network Utility Operator	35
4.4 Dogs	19	SECTION 6 - TOURISM AND ECONOMIC DEVELOPMENT	36
4.5 Walkways	20	6.1 Promotion	36
Section 4B - Organised Sport	21	6.2 Signage.....	36
4.6 Organised Sport	21	SECTION 7 - MANAGEMENT / CO-OPERATION	37
Section 4C - Restricted Activities	22	7.1 Bylaws	37
4.7 Aircraft Landings and Take-off	22	7.2 Encroachment.....	37
4.8 Horse Riding.....	22	7.3 Future Reserve Land Acquisition.....	38
4.9 Motorhomes and Camping.....	23	7.4 Maori.....	39
		7.5 Public Involvement and Partnerships	39
		7.6 Reserve Neighbours	40

7.7	Safety and Risk Management	40
SECTION 8 - MONITORING OF MANAGEMENT PLAN		41
8.1	Management Plan Review	41
8.2	Monitoring of Management Systems	41
RESERVE PLANS – REFER TO DOCUMENT 2.....		42
List of reserves covered by Document 2		42
APPENDIX 1: COROMANDEL & COLVILLE RESERVE MANAGEMENT PLAN WORKING GROUP		45
APPENDIX 2: RESERVE CLASSIFICATIONS		46
Recreation Reserve		46
Local Purpose Reserve - LPR.....		46
Historic Reserve		47
Esplanade Reserve		49
Government Purpose Reserve.....		49
National Reserve.....		50
Nature Reserve		50
Scientific Reserve		51
APPENDIX 3: TCDC TREE STRATEGY – SECTION ON TREE REMOVAL		52
APPENDIX 4: RESERVES REQUIRING CLASSIFICATION		53
APPENDIX 5: REVOKING RESERVE CLASSIFICATION		54
APPENDIX 6: COUNCIL BYLAWS THAT APPLY TO RESERVES		55
GLOSSARY OF TERMS		56

Index

		Fences30	Motorhomes..... 24
	A	Fire..... 15	motorised vehicles 24
Access.....20		firearms.....24	
aircraft.....24		flooding 18	N
Aircraft23		Future Land Acquisition40	Naming of Reserves 33
Alcohol20			National Reserve 52
Animal Pests17		G	Natural Hazards 18
		Gardens.....12	Natural values..... 11
	B	Glossary.....58	Nature Reserve52
Bequeathed Land31		Government Purpose Reserve.....51	Neighbours42
Boat ramps33		Graffiti42	Network Operator36
Buildings and Structures.....29			P
Bylaws39, 57		H	Partnerships41
		habitats.....14	Permit Applications27
	C	Historic Places Trust..... 13, 30	Permits.....25
Camping24		Historic Reserve49	Plan Review.....43
Changing Facilities35		horse riding24	Plant Pests 17
Charges for Leases etc28		Horse Riding.....23	playgrounds 20
Commemorative Features31			Playgrounds 34
Community Consultation.....8		L	Prohibited Activities24
Concessionaires25		Landmarks 16	Promotion 38
Cultural Significance 13		Landscape16	Public Involvement.....41
	D	Landscape values.....11	public use..... 19
Development.....30		Lease Applications27	
Dogs.....20		Leases25	R
		License Applications27	Recreation..... 19
	E	Licenses25	Recreation Reserve48
Ecosystems 14		Lighting32	Reserve Act Classifications5
Encroachment39		Liquor Licences29	Reserve Furniture35
Esplanade Reserve51		Local Purpose Reserve48	Reserve Management Plan2
	F	LPR.....48	Reserves Act 19772
facilities36			Restricted Activities23
		M	Risk management42
		Maori41	
		Monitoring.....43	

S				V	
Safety management.....	42	TCDC District Tree Strategy 2003	12	Vehicles - parking	34
Scenic Reserve.....	50	Toilets.....	35	vehicular access.....	20, 31
Scientific Reserve	53	Tourism	38		
Signage	38	Tree removal.....	12, 54	W	
Sport	22	Tree strategy	54	Walkways	21
Sporting needs	36	Trees and Shrubs	11	Wildlife Reserve	53
sportsgrounds.....	20	Trees, Shrubs and Gardens	11		
T		U			
tangata whenua	13, 41	Utilities	36		

Introduction and Overview

Section 1: Purpose of this Plan

Reserve Management Plans provide direction for the day-to-day management of Reserves, factors that impact upon these Reserves, and establishes clear directions for future management and development where appropriate. This plan will provide for consistent approach to the management of reserves in the Coromandel and Colville areas.

The Coromandel and Colville Reserve Management Plan endeavors to address the broad range of issues associated with Reserves in a comprehensive and holistic manner.

In order to obtain a broad base of input into the plan, the Council assembled a working group comprising key stakeholders. A list of members of the working group is detailed in Appendix 1.

1.1 Reserve Management Plan Requirements

The Thames-Coromandel District Council (the Council) has a responsibility as an administering body under the Reserves Act 1977, Section 41, to prepare management plans for the reserves and parks that it manages.

These management plans should:

“... provide for and ensure the use, enjoyment, maintenance, protection, and preservation ... and, ... the development, as appropriate, of the reserve for the purpose for which it is classified”. Reserves Act 1977, 41 (3).

Where a reserve or part of a reserve is not gazetted, as detailed in the Reserves Act (Section 14), a local authority is still required to prepare a management plan detailing the function and management of the reserve.

Open space is recognised as an important component of the urban environment, providing opportunities for recreation and leisure. This Management Plan provides a framework within which managers can develop a balanced response to current opportunities and address future pressures.

The reserves in the Coromandel and Colville area have historical, cultural and scenic values, and provide valuable open space for a range of recreational

activities and settings; from sports ground to historical reserves, from coastal settings to children's playgrounds. The Management Plan identifies clear objectives and establishes directions for planning, resource management and maintenance of public open space. It clarifies and establishes Council policy and direction, for both Council staff and the public.

The individual reserve plans in Document 2, provide a basis for assigning priorities in works programming and budgeting.

Where required existing plans have been reviewed, and where appropriate incorporated into this Plan. This Management Plan will be reviewed regularly, with an annual review to assess implementation and performance, a review every five years for policy and planning issues, and updated / redrafted every 10 years.

Overview of Reserve Plan Area

Much of the Coromandel terrain is a rugged landscape, with coastal inlets and harbours, rising through bush and forest streams to the mountainous range running the length of the peninsula. The "Coromandel Peninsula is also referred to as Te Tara-o-teika—a-Maui (the jagged barb of Maui's fish)"¹.

Kupe who sailed from Hawaiki is said to have made landfall at Te Whitianga-a-Kupe, and three centuries later Toi-te-hautahi followed and he and his crew settled in the Hauraki area. Later with the arrival at Moehau of the Arawa canoe, two of its chiefs Tuhoromatakaka and Hei, disembarked with their followers who intermarried with the local Toi inhabitants².

The Maori of Coromandel are predominantly of Tainui and Te Arawa stock. However, the Coromandel "also embraces and recognises the impact of many relocated tribal divisions who have become permanently established"³ in the region. In the many bays and inlets that are a unique part of the Coromandel, pa were established, and Maori flourished.

The first Europeans recorded to visit this area was Captain James Cook and his crew aboard the Endeavour. On 18th November 1769, Cook rounded the northern point of the peninsula and named it Cape Colville after the Right Honourable Lord Colville.

¹ Taimoana Turoa, 2000, "Te Takoto O Te Whenua O Hauraki", Reed Publishing NZ, p 37

² abridged: Taimoana Turoa, 2000, "Te Takoto O Te Whenua O Hauraki", Reed Publishing NZ, p 48-49

³ Taimoana Turoa, 2000, "Te Takoto O Te Whenua O Hauraki", Reed Publishing NZ, p 39

After Cook came more Europeans, seeking timber, gum and finally gold. Coromandel, named after the British naval vessel HMS Coromandel, arrived in 1820 for a load of ships spars. The Ring brothers discovered traces of gold at Coromandel in 1852, but it was not till the Thames area was opened for gold in 1867, did the fields of Coromandel become available in the 1870's.

Colville was once a kauri millers' camp, and is now the last settlement on the coastal road north of Coromandel.

Coromandel Reserves

The main Coromandel Reserves are Patukiri, which provides a large open space on the south-west side of the town, the Coromandel Domain which is the main sporting ground for this community, Hauraki House with its historic school building and Long Bay Reserve, with its beach and campground.

Many other smaller reserves are located around Coromandel town and provide for a range of opportunities and experiences for locals and visitors who

Colville District Reserves

Many of the reserves in this area are around the coastal margins, and provide for access to and along the beach. While some are large, such as the Kauri Reserve situated near the head of the Waitete Stream, many of the reserves are small coastal or esplanade areas. Some of the reserves have historical connections, such as the pa site at Tuateawa and Otautu, and need further protection and interpretation so that their existence is understood and respected.

For management purposes, the Coromandel and Colville Reserve Management Plan will cover the northern part of the Coromandel Peninsula, bordered by Waikawau in the south west, and Kennedy Bay in the east.

Section 2: Reserve Management Plan Process

2.1 Reserve Act Classifications

Under Section 16 of the Reserves Act (1977), (“the Act”) it is mandatory that reserves be classified based on their purpose. The Act provides for eight different reserve classifications, these being:

- Local Purpose Reserves
- Government Purpose Reserves
- Recreation Reserves
- Historic Reserves
- Scenic Reserves ‘A’
- Scenic Reserve ‘B’
- Nature Reserves.

Detailed descriptions of each of these Reserve classifications and variations are in Appendix 2

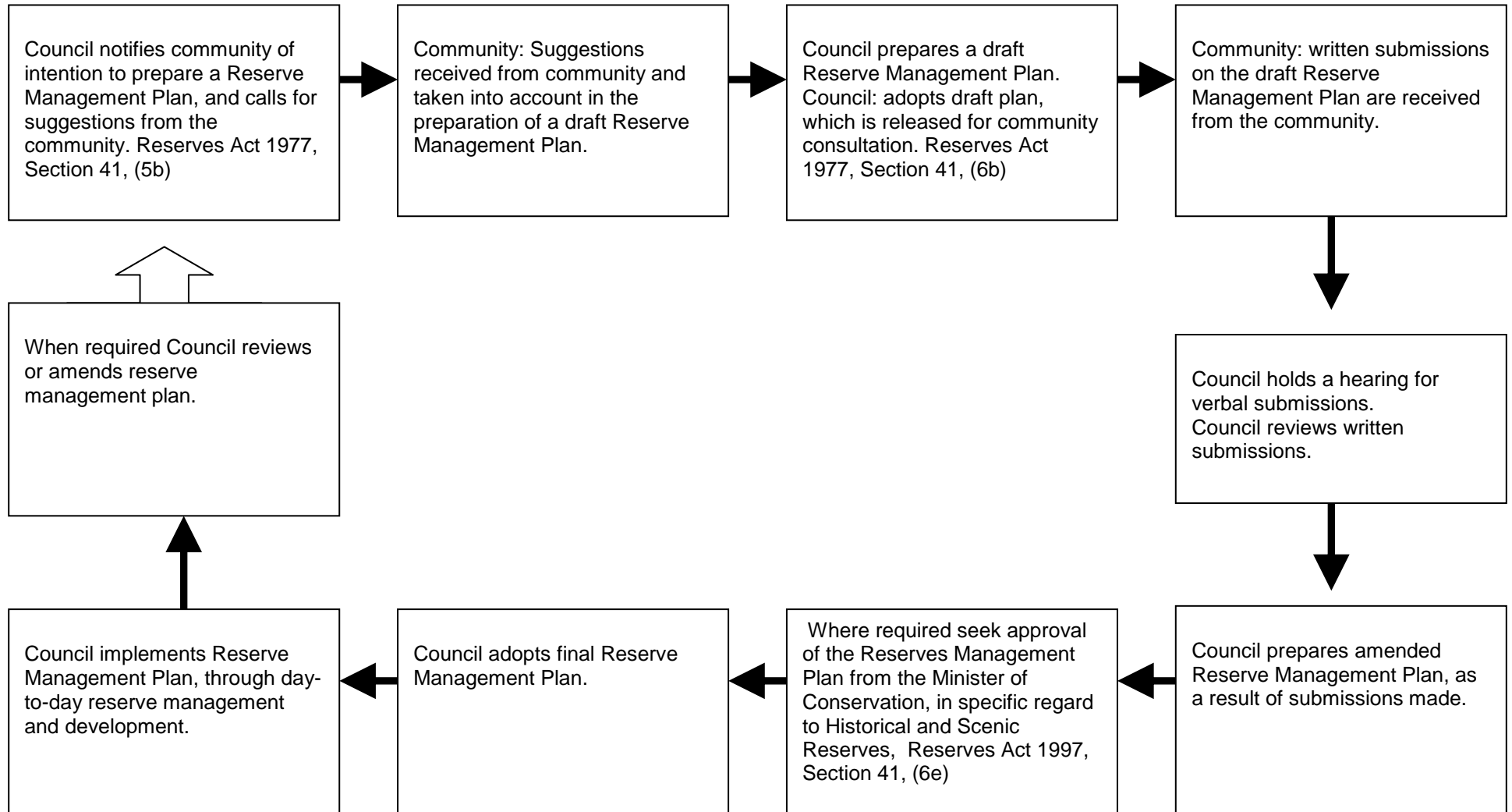
Reserves in the Coromandel and Colville area are classified as: Recreation reserves, Scenic reserves, Historic reserves, Local purpose reserves – esplanade.

Reserves may have more than one classification, particularly if the values requiring protection vary from one part of the reserve to another, (to achieve a dual classification the land area needs to have been surveyed to define the boundary between the lands requiring different classifications).

In some instances, reserves or parts of reserves have not yet been classified or gazetted. A list of these reserves and proposed classifications are detailed in Appendix 4.

During the preparation of this Reserve Management Plan, Council have identified some areas of land held under the Reserves Act 1977 that do not contribute towards any current or future public outcomes or needs. Council is reviewing that the Reserve classification of these land areas to be **revoked (withdrawn, cancelled)**, and the land to be sold. These land areas are identified in Appendix 5.

The procedure for preparing reserve management plans is set out in the Reserves Act (1977). A summary of this process is detailed in the following diagram.



2.2 Community Consultation

Community consultation plays an important role in the production of any Management Plan. It provides Council with a sound understanding of relevant local issues from people who are familiar with and use the open space areas in question. To a large degree, the direction for the future development of open space is based on the views expressed by the general public.

Public involvement and consultation generates an understanding of Council's land management aims, combats misinformation and misunderstanding, and fosters support for Council's programs and policies.

Submission Period

Public consultation was undertaken from August – October 2006 with a submission hearing held on 20th November 2006. Thirty two submissions were received on the draft management plan (Documents 1 & 2). The submissions were reviewed and decisions made on issues raised. Where required, amendments have been undertaken to objectives and policies, and the individual reserve management plans.

Submission Process

For future changes to the management plan (either document), submitters should:

- (1) List all points according to the section and page number in the management plan.

- (2) Briefly describe each subject or issue.
- (3) State which strategies the submitter agrees or disagrees with.
- (4) Suggest alternatives to deal with any issue with which there is disagreement.

Submissions may be:

Posted to:

Coromandel and Colville Draft Reserve Management Plan

c/- Area Manager, Coromandel

Thames-Coromandel District Council

Private Bag

THAMES 2801

Delivered to:

Coromandel Service Centre

355 Kapanga Road, COROMANDEL

Faxed to:

07 866 1003

Aims of this Reserve Management Plan

The Reserves Strategy (approved by Council in 2002) identifies strategic objectives for reserve provision across the District and to ensure that the Council achieves these standards and objectives. The Council wishes to ensure a consistent approach to the management both of physical resources and the provision of publicly funded recreation and leisure facilities.

AIM: Protection of natural, cultural and heritage values

Open space is important for recreation and leisure as well as other values. Council must consider recreational, natural, heritage and cultural values in managing its reserves.

AIM: Open space is available for present and future public recreation and leisure needs.

Council's role is important in providing and securing resources, including financial, land or other resources, to meet the needs of present and future users of public recreation facilities and spaces in the District.

AIM: Reserves are accessible, safe, and appropriate

It is the communities' desire to have good access to a range of open space areas. Facilities on these reserves reflect the needs, and the unique character of that locality. It is Council's legal responsibility to provide safe and healthy facilities.

AIM: Public facilities are available to all users.

Outdoor public recreational opportunities are available to anyone, regardless of where they live. Recreation also contributes directly and indirectly to the local economy, especially tourism and retail activity.

AIM: Council will work with community groups to provide and promote recreation and leisure facilities

This identifies a number of different ways that Council may work with the community to provide a better range of facilities and services.

The following Sections of this Reserve Management Plan identify how the Council will manage Reserves covered by this Plan:

Objectives and policies are found in the following sections:

- Section 3 Landscape and natural values.
- Section 4 Recreation and leisure, focusing on; general recreation, organised sport, restricted activities, prohibited activities, and special use activities such as leases and licences.
- Section 5 Recreation and leisure, with a focus on the provision of facilities for sport and recreation users.
- Section 6 Tourism and economic development.
- Section 7 Management and co-operation – how Council will work with neighbours, volunteer groups and Maori on reserve issues.
- Section 8 Monitoring of management plan – how and when this plan will be kept under continuous review.
- Section 9 Reserve Plans – identifying individual reserves and any proposed development.

Note:

The following sections should be read as a whole. **This means that more than one objective and/or policy may be relevant in any given situation.** Plan readers should therefore seek to identify all relevant objectives and policies relevant to an issue.

Section 3: Landscape and Natural Values

3.1 Amenity Values – Trees, Shrubs and Gardens

3.1.1 Objectives

- 3.1.1.1 To provide a range of natural shade and shelter opportunities within reserves.
- 3.1.1.2 To maximize the benefits of trees while avoiding or mitigating adverse effects on reserve neighbours
- 3.1.1.3 To provide for and achieve healthy garden environments that provides attractive settings for the users of the reserve.

Rationale

Trees are desirable features of reserves. They contribute to the recreation (e.g. shade), landscape and heritage values of a reserve. Trees however can become nuisances over time, particularly leaves blocking gutters, roots affecting drains and footpaths, and dangerous branches. The Reserves Act 1977, Section 42, refers to trees with particular reference to recreation reserves. Thought and care needs to be given firstly to the species selection and placement of trees, and secondly to the long-term maintenance of trees on or near boundaries. As with trees, plantings and garden areas add value and are desirable features of reserves. These planted areas contribute to the aesthetic appearance of a reserve, particularly where the adjoining land is heavily modified with paving or buildings.

3.1.2 Policies

Trees and Shrubs

- 3.1.2.1 Tree plantings on reserves will take into account:
 - a. the current Council Street Tree Plan;
 - b. where native trees are appropriate the preferable use of eco-sourced trees;
 - c. the type of reserve and any specific management policies for that reserve;
 - d. any effect on facilities;
 - e. the effect the trees may have on underground and overhead services; and landscape values and considerations.
 - f. The effect the trees (including planting, removal, or general landscaping) may have on surface or subsurface archaeological features.
 - g. The effect the trees (including planting, removal or general landscaping) may have on surface or subsurface archaeological features.
- 3.1.2.2 Where appropriate, shade trees will be planted in reserves to provide sun/wind protection for users.
- 3.1.2.3 Plantings will generally be developed to be low maintenance in the long term. This will include the selection of appropriate species, use of slow release fertiliser and mulch.

- 3.1.2.4 Where exotic species are planted, these will be selected due to:
- a. the desire for a particular shape, form, colour or species,
 - b. an historical association,
 - c. a particular connection to a place or an individual.
 - d. the desirability of providing food and shelter for nectar feeding birds.
 - e. flowering plants for colour.

Tree Removal

- 3.1.2.4 Tree removal is covered in the TCDC District Plan and the TCDC District Tree Strategy 2003. Refer to Appendix 3
- 3.1.2.5 If necessary Council may seek a landscape report that details comment on the value of the public amenity of the tree that is subject to complaint.
- 3.1.2.6 Council will consider the following issues when making decisions about trees:
- a. any actual or potential danger to peoples health;
 - b. any undue interference with a neighbours land, including shading;
 - c. Maori cultural values, e.g. removal of dead trees for carving purposes.

Gardens

- 3.1.2.7 Gardens and plantings on Council reserves will take into account:
- a. management objectives and policies for the reserve,
 - b. landscape values and considerations,
 - c. use of non-invasive plant species.
- 3.1.2.7 All plants will be grown in an environment where pruning and cultivation are undertaken to promote healthy environment.
- 3.1.2.8 Monitor plant species which are susceptible to pest and diseases, and where there are no safe or effective methods of control, undertake removal.

3.2 Cultural Significance

3.2.1 Objectives

3.2.1.1 To protect areas of archaeological and cultural significance within a reserve.

3.2.1.2 To identify and record any archeological or heritage areas found on reserves

Rationale

Many of the Reserves contain sites of Maori or early European use and settlement. Conserving, and enhancing a representative range of these resources will enable current and future generations of the region to continue to appreciate and enjoy the region's unique cultural heritage. Unless historic heritage resources are identified and assessed, strategies for their management cannot be developed. While the Council has identified and assessed many resources, there are still some areas where further work is required. Current records will also have to be periodically reviewed as new information becomes available.

The New Zealand Historic Places Trust has undertaken an archaeological survey on the east coast of the Coromandel Peninsula from Buffalo Beach to Whiritoa.

3.2.2. Policies

3.2.2.1 Develop an inventory for each reserve area to identify known and potential:

- a. archaeological sites
- b. cultural heritage sites and
- c. historic associations

3.2.2.2 Prior to any development on a reserve, any known archeological sites, structures or features will be identified and avoided where possible.

3.2.2.3 During any reserve development, upon the discovery of any archeological sites, structures or features, the following actions will be adopted:

- a. work in the vicinity of the site, structure or feature will cease immediately.
- b. appropriate agencies such as the New Zealand Historic Places Trust, tangata whenua and other statutory agencies as required, e.g. Police, will be notified.

3.2.2.4 Where a discovery addresses matters of significance to tangata whenua / hapu, identification and assessment shall be done in partnership with Maori and other heritage agencies, taking into consideration:

- a. established protocols relating to the discovery, re-burial or removal of taonga and koiwi, and future protection
- b. Maori / Iwi determination of the disclosure or non-disclosure of sites.

3.3 Ecosystems

3.3.1 Objectives

3.3.1.1 To protect natural areas representative of the range of natural ecosystems of the region.

3.3.1.2 To enhance natural ecosystems that:

- a. have high ecological values,
- b. are representative of ecosystems that are under threat or under represented.

Rationale

These reserves contain a variety of ecosystems and natural habitats that are unique to the area. The enhancement of these areas is required to maintain a balance between public use and protection.

3.3.2 Policies

3.3.2.1 Protect all unmodified natural habitats and ecosystems.

3.3.2.2 Priority will be given to:

- a. harbour and estuary shoreline margins that lie within a Reserve boundary,
- b. rocky shore and coastline margins that lie within a Reserve boundary,
- c. remnant natural forest areas, and
- d. where access is difficult, dangerous or to protect the undergrowth/root system, steps and /or boardwalks may be built.

3.3.2.3 Enhancement of natural ecosystems will include, but is not confined to:

- a. the control and eradication of introduced plants and animals,
- b. re-vegetation using locally sourced plant species,
- c. restriction of access to some areas of the reserve.

3.4 Fire

3.4.1 Objective

3.4.1.1 To avoid damage or destruction of reserve land by fire.

Rationale

All fires, whether lit naturally, accidentally or deliberately can pose a risk to visitors, native vegetation, species, historic places, artifacts and assets, and adjoining property.

3.4.2 Policies

3.4.2.1 The use of open fires, including portable barbecues using solid fuels, will only be permitted in designated areas and when the fire is permitted by controls implemented through the Forest and Rural Fires Act 1977.

3.5 Flora and Fauna

3.5.1 Objective

3.5.1.1 To protect indigenous flora and fauna on reserve land areas.

Rationale

Human development and settlement has had a major impact on our native species. Where possible public use should have minimal impact on any natural areas within these reserves

3.5.2 Policies

3.5.2.1 No adverse activities will affect native flora and fauna found within reserve land areas.

3.6 Landscape

3.6.1 Objective

3.6.1.1 To protect significant landmarks, landscapes and vistas.

Rationale

A key focus of reserves is on the visual and natural qualities of the area. Development of any kind will be kept to a minimum, and when appropriate, undertaken and managed so as to have minimal physical and visual intrusion. There are spectacular panoramic views from some reserves that enhance the experience and enjoyment of the visitor. Natural re-growth and re-vegetation programs can diminish and obliterate these views, and need to be sensitively managed to retain the recreational amenity of these sites. When planning any development or specific management program, any likely impacts on the reserve will be investigated and assessed. This will ensure that any potential impacts are minimised.

3.6.2 Policy

3.6.2.1 The landscape quality of a reserve will be enhanced and maintained by:

- a. conserving dominant landscape features,
- b. protecting cultural associations
- c. retaining key sightlines, vistas and panoramic views,
- d. ensuring that any development in a reserve is appropriate to the setting,
- e. removing any redundant structures and facilities,
- f. avoiding any buildings or structures on coastal reserves unless provision has been specifically made in this plan.

3.7 Plant and Animal Pests

3.7.1 Objectives

3.7.1.1 To manage plant pests identified in the Environment Waikato Plant Pest Strategy.

3.7.1.2 To control other plant pests where required.

3.7.1.3 To control animals and pests identified in the Environment Waikato Animal Pest Strategy.

3.7.1.4 To control other animal pests where required.

Rationale

The Council as a land manager is required to meet its obligations under the Environment Waikato Regional Pest Strategy. Where required this may mean eradication of a species or for others this may only require only boundary control, that is taking measures to ensure that a plant pest established on a Reserve does not spread off that park onto neighbouring properties.

3.7.2 Policies

Plants

3.7.2.1 Introduced plant species that have been identified in the Environment Waikato Plant Pest Strategy will be progressively removed from reserve land areas.

3.7.2.2 Management of particular plant pests in a reserve will be undertaken where identified.

3.7.2.3 Plant pests will be managed as budget and priority are assessed in conjunction with EW. Council will use alternative weed control measures taking into consideration budgets and options available to contractors/field staff.

3.7.2.4 Exotic plant species will not be removed where they:

- a. have historical or cultural significance,
- b. provide a range of amenity values

Pests

3.7.2.5 Programmes for the control of pests will give priority to where pest species are identified in the Environment Waikato Animal Pest Strategy, and

- a. areas that contain significant habitats, ecosystems, or
- b. where the species detract from visitor use and enjoyment.

3.7.2.6 Management of particular animal pests in a reserve will be undertaken where identified.

3.8 Natural Hazards

3.8.1 Objective

3.8.1.1 To assess the risks of flooding and/or erosion to Council facilities and visitors to a reserve.

Rationale

Flooding and erosion are the two main natural hazards in the Coromandel region. While this plan does not specifically address these issues, the emphasis is on avoidance rather than protection. It recognises that hazard events are natural occurrences and that locating activities in inappropriate places creates the risk.

3.8.2 Policy

3.8.2.1 The siting of facilities should have regard to natural hazard threats.

3.8.2.2 Planning should focus on the protection of reserves from flooding, erosion, and other natural hazards

Section 4: Recreation and Leisure

Section 4A - General Use

4.1 General Recreation – Use of Reserves

4.1.1 Objective

4.1.1.1 To allow and encourage public use of reserves that is compatible with the purpose of the reserve.

Rationale

The primary role of Reserves is to provide settings for people to enjoy themselves on a casual and unstructured basis while undertaking traditional activities such as walking, picnicking and informal games. These traditional activities are generally low impact, have little adverse effects on other park users and can be undertaken with minimal restriction.

4.1.2 Policies

4.1.2.1 People will be encouraged to use reserves for a range of activities that is compatible with the reserve purpose and does not impact the environment or other users.

4.1.2.2 Users of reserves shall be responsible for ensuring that their use complies with Council Bylaws. [Refer to Reserve Bylaws – Appendix 6]

4.1.2.3 Passive activities may include:

- a. Family group picnics, bbq's.
- b. Informal family or group activities including games, recreational activities, and sport.
- c. Walking, running, exercise activities.

4.2 Access

4.2.1 Objective

4.2.1.1 Open access, where possible, will be provided to all Council reserves.

4.2.2 Policies

4.2.2.1 The provision of access to Council reserves will be provided unhindered, except:

- a. where degradation may occur to cultural or historical sites through public use,
- b. where access is unsuitable due to the nature of the terrain,
- c. where commercial operators gain private good from the use of reserves [e.g. leases and licences].
- d. where necessary for the maintenance or protection of the reserve, or safety of reserve users, part or the entire reserve may be closed for public access.
- e. where part or all of a reserve may be closed to public access for maintenance or any event, notification of this will be made prior to the event.
- f. for vehicle access where required will be restricted to formed roads and car parks

4.2.2.2 Private vehicular access reserve land, to or from private property will not be permitted except where a formal written agreement exists with Council (e.g., easement).

4.3 Alcohol

Refer to the Council Bylaws on Alcohol. The Council can place conditions on the use of alcohol in reserves including partial and total bans.

4.4 Dogs

4.4.1 Objective

4.4.1.1 To allow dogs provided they do not have an impact on the environment, or other reserve users.

Rationale

Dogs can pose a direct threat to people, animals and birds. Dogs should be under direct and continuous control at all times. This may be achieved through voice control. In cases where the owner cannot guarantee this level of control, dogs should be on a lead. Owners must also be considerate of other reserve users and remove dog droppings as required by law.

4.4.2 Policies

4.4.2.1 Dogs will generally be excluded from the following areas:

- a. nesting, roosting and feeding areas of threatened bird species;
- b. scenic reserves; except where provided for (e.g., Shakespeare Cliff Reserve).
- c. playgrounds and sports grounds.

4.4.2.2 Dogs must be under control at all times and owners must remove all droppings from the reserve.

4.5 Walkways

4.5.1 Objectives

- 4.5.1.1 Promote a walkway that links the reserve areas of Coromandel Township.
- 4.5.1.2 Promote walkway linkages to adjacent DOC reserves.
- 4.5.1.3 Promote any walkway linkages.

Rationale

Some of the Reserve areas in Coromandel Township could be linked with a walking path network. This would cater for the enjoyment of the user and provide community health benefits. The reserves along the coast can also be linked together, in conjunction with either a coastal walkway or the Department of Conservation track network. These walking routes once established should be promoted to local residents and visitors for health and tourism benefits.

4.5.2 Policies

- 4.5.2.1 Where possible provide walking track facilities through reserve areas that:
 - a. are suitable to a range of peoples abilities,
 - b. provide linkages between reserves.
- 4.5.2.2 Develop a coastal walkway track with linkages. This may not follow the coastline.

4.5.2.3 Provide appropriate walkway signage.

4.5.2.3 When assessing a walkway route cultural values and known archaeological sites should be considered and avoided where possible.

4.5.2.5 Where appropriate, provide for cycling.

Section 4B - Organised Sport

4.6 Organised Sport

4.6.1 Objective

4.6.1.1 To encourage organised sport to take place on a reserve or part of a reserve set-aside for that purpose.

4.6.2 Policies

4.6.2.1 Where possible, active sports and recreation activities requiring facilities will be grouped to maximise the sharing of facilities.

4.6.2.2 The use of reserve land for the playing of organised sport will:

- a. consider the appropriateness of the activity to the area, and take into account any possible impact this activity may have.
- b. only be approved when permission for the sporting activity has been sought and obtained from Council.
- c. not be undertaken during such time when maintenance is being carried out on the land area.

Section 4C - Restricted Activities

4.7 Aircraft Landings and Take-off

4.7.1 Objective

4.7.1.1 To prevent the use of reserves for aircraft activities.

Rationale

Aircraft landing and taking off from reserves has a large impact on other reserve users due to noise factors, inconvenience on the use of open space, and safety aspects.

4.7.2 Policies

- 4.7.2.1 The use of reserves by any type of motorised aircraft is not permitted, except for the following circumstances;
- a. for emergency only landings of aircraft.
 - b. for emergency evacuation of people under the control of the New Zealand Police, NZ Fire Service, St John Ambulance or surf lifesaving organisation.
 - c. where a Permit (refer to Section 4E) has been issued by Council.

4.8 Horse Riding

4.8.1 Objective

4.8.1.1 To provide for horse riding on some reserves where the activity does not create undue conflict with other reserve users or have adverse effects on the environment.

Rationale

Many people in the community enjoy horse riding. Activities such as this can create conflicts with other users and may, if undertaken in inappropriate areas, adversely affect the reserve environment. Given this, it is important that people are aware of where these activities may be undertaken.

4.8.2 Policies

- 4.8.2.1 There are currently no designated areas for horses although horses can access the beach via designated vehicle access points and boat ramps.
- 4.8.2.2 Restrictions for horse riding are necessary to protect:
- a. the environment, including the cultural and archaeological values within a reserve,
 - b. the health, safety, and well being of visitors and
 - c. reserve operation and management.

4.9 Motorhomes and Camping

4.9.1 Objective

4.9.1.1 To allow for self-contained motor-homes overnight use on some reserve areas.

Rationale

Currently the Council has a policy of no overnight camping on reserves, except those which have a licensed campground which allows for camping.

4.9.2 Policies

4.9.2.1 Independent overnight parking by vehicles such as motor-homes is not permitted on reserves.

4.9.2.2 Overnight camping on reserves is not permitted.

Section 4D - Prohibited Activities

4.10 Prohibited Activities

4.10.1 Objective

4.10.1.1 To prevent activities from occurring that would have an adverse impact on the natural environment and amenity values of a reserve or would significantly detract from the enjoyment of other reserve users.

4.10.2 Policy

4.10.2.1 Except for approved operational purposes, or unless specific written approval for an event has been obtained from the Council, the following activities are prohibited on reserves:

- a. motorised vehicles off road.
- b. horse riding in Scenic or Historic Reserves.
- c. firearms, slingshots, projectile firing devices.
- d. aircraft landings

Section 4E - Recreation and Leisure – Concessionaires: Leases, Licences and Permits

Definitions

Lease: Means a grant of an interest in land that –
 (i) Gives **exclusive possession** of the said area of land; and
 (ii) Makes **provision for any activity** on the land that the lessee is permitted to carry out.

Example: long term activity, exclusive use (e.g. use of a building, part of a reserve).

License: Means -
 (i) A **profit a prendre** or any other grant that gives a **non-exclusive interest** in the land; or
 (ii) A grant that makes **provision for any activity** on the land that the licensee is permitted to carry out.

Example: short term, non-exclusive use i.e. 13 days to six months (e.g. summer mobile café).

Permit: Means -
 (i) A grant of rights to carry out an activity that does **not require an interest in land**.

Example: special use, one off events, non-exclusive use, 1 – 12 days (e.g. circus, music concert)

4.11 Leases, Licences and Permits

4.11.1 Objectives

4.11.1.1 To allow for the occupation of reserves for approved uses and facilities by the granting of lease, licence or permit.

4.11.1.2 To allow the use of a reserve for special activities where that use is compatible with the designated purpose of the reserve area.

4.11.1.3 To undertake a case-by-case assessment of activities that are not covered by this plan.

4.11.1.4 To process applications for lease and/or license agreements on reserves in an efficient, fair and transparent manner.

Rationale

Leases grant a proprietary right over the land covered by a lease agreement. This right sometimes enables the lessee to carry out activities without Council agreement and to restrict public access to the land covered by the lease agreement. Given this, the Council may wish to approve only Licence agreements in the future. While the Council may not intend to approve any new leases it is obliged to administer the existing leases in terms of the conditions of those leases.

Whilst a lease, license or permit can be issued for an activity on a reserve, the activity must be compatible with the Reserves Act classification of the reserve (e.g., recreation reserve, esplanade reserve).

4.11.2 Policies – General

4.11.2.1 Activities that require approval, include, but are not limited, to:

- a. all commercial activities on or across reserve land;
- b. activities that require exclusive use of ,or part of a reserve, including public and private events:
- c. telecommunication and radio-communications stations;

- d. or any other similar activities which are not specifically provided for in this Plan
- 4.11.2.2 Written applications for a lease, licence or permit shall be made to Council;
- a. At least 75 working days for a concert, expo, festival, function, promotion, sport event, seasonal commercial operator and government screening programme and any activity type that will involve more than 500 spectators /participants.
 - b. At least 30 days prior to a wedding ceremony, circus, filming or small display.
 - c. At least 6 months prior to the requested start date for a lease.
- 4.11.2.3 All costs associated with leases, licenses and permits are the responsibility of the concession holder of the agreement.
- a. Fees/rent will be payable on all concessions, according to Council policy.
 - b. Where a lease is approved, the term of the lease and any subsequent renewal will not exceed 19 years 364 days. (*Refer to Note below*)
 - c. Where leases, licenses or permits are to be granted on a Historic or Scenic reserve, the Department of Conservation will be the decision-making authority.
 - d. Where leases, licenses or permits are to be granted on other reserves, the Council will be the decision-making authority.

Rationale

Under the Resource Management Act 1991, an interest in land over 20 years may be subject to the applicant having an interest in that land. As such Council will only issue a lease for a period of 20 years less 1 day, i.e. 19 years, 364 days.

- 4.11.2.4 Public notification will be undertaken where a concession applicant has
- a. applied for the exclusive use of an area of reserve;
 - b. the potential for high impact on the environment or surrounding area
- 4.11.2.5 Notification shall be made via Council public notice in the local paper circulating in the district. The applicant will be responsible for meeting the cost of public notification and hearing if required.
- 4.11.2.6 The notification of proposed lease agreements shall serve as public notice for the purpose of the Reserves Act.

Policies - Lease Applications

- 4.11.2.7 A lease must be for a group or organisation which is "compatible" with the reserve legal classification
(*e.g., a butcher shop is not compatible but a café may be*).
- 4.11.2.8 A lease will be issued where the use of a reserve is exclusive.
- 4.11.2.8 Where current leases allow for a right of renewal, or new leases are being sought, the lease shall incorporate the appropriate provisions

of the First Schedule of the Reserves Act 1977, except where the Council's tenure of the land requires otherwise.

4.11.2.9 Council will maintain current lease agreements.

Policies - License and Permit Applications

4.11.2.10 All applicants who wish to hold an activity on a reserve are required to complete:

- a. The *Reserve Concession Application Form*,
- b. A site plan and
- c. A hazard identification form (not required in some circumstances).

4.11.2.11 An event plan and health and safety plan is also required for larger events. For more information on the requirements to operate on a reserve see the "*Applicant Information Pack for a Permit or License to operate on a TCDC reserve*".

4.11.2.12 A license will be issued where the use of a reserve is non exclusive and for a period of 13 days to three years. Such licences may have rights of renewal attached and assignment will be at Council's discretion.

4.11.2.13 A permit will be issued where use of a reserve is non-exclusive and for a period of 0-12 days.

4.11.2.14 Council will maintain current license agreements.

4.11.2.15 Where part or all of a reserve is to be closed to public access, for an activity, notification of this shall be made prior to the activity causing the closure. Notification shall be made via Council public notice in the local paper circulating in the district at least two weeks before the closure. The activity organisers will be responsible for meeting the cost of public notification.

4.11.2.16 Where there is a possibility of serious damage being caused to the reserve; or disruption to users; neighbouring properties; or property or persons on adjacent public land, Council may require the organiser to have public liability insurance and other appropriate insurance cover. A copy of this will be required prior to the license or permit being issued.

4.11.2.17 Public Liability Insurance of at least \$1 million is required for all commercial activity on a reserve.

4.12 Charges for Leases / Licenses or Permits on Reserve Land

4.12.1 Objective

4.12.1.1 To recover costs to the Council and community, for processing of applications and managing the reserve.

4.12.2 Policies

4.12.2.1 Where a lease, license or permit is approved, Council may charge the applicant a fee which:

- a. reflects current market values;
- b. covers administration costs.

4.12.2.2 A bond may be required for using a reserve/s. The following factors will be considered in assessing the amount of a bond:

- a. The size of the activity,
- b. The possibility of damage to the reserve.

4.12.2.3 A bond will be set at such a level that any possible damage can be repaired at no cost to Council. Amounts in excess of repair costs will be refunded. If a bond does not cover the cost of repairing damage, the difference will be charged to the concession holder and/or group using the reserve.

4.12.2.4 Payment of bond is required at Council at the time of making an application.

4.13 Liquor Licences

4.13.1 Objective

4.13.1.1 To allow the granting of liquor licences for premises on reserves where the values of the reserves are not diminished and where the effects on reserve neighbours can be avoided.

4.13.2 Policy

4.13.2.1 All Liquor licences on reserve land will be in accordance with Council bylaws and policies, the Liquor Licensing Act and regulations.

Section 5 - Recreation, Leisure and Sport Facilities

5.1 Buildings and Structures

5.1.1 Objectives

- 5.1.1.1 To provide only those buildings and structures that are required to meet reserve user needs.
- 5.1.1.2 To allow for removal of buildings when no longer required in the foreseeable future.

5.1.2 Policies

- 5.1.2.1 The provision of buildings and structures on a reserve will be for sporting, cultural and recreation purposes and to facilitate the appropriate use of the reserve.
- 5.1.2.2 Buildings and structures deemed necessary by Council, will be provided and maintained only where they are necessary to achieve management objectives and policies or are specifically provided for in this plan.
- 5.1.2.3 Any new buildings or alterations to buildings and structures, will comply with required resource and building consents.
- 5.1.2.4 Where a building is no longer required by an occupier or has become redundant, the occupier will be required to remove the building from the reserve.

5.2 Development

5.2.1 Objective

- 5.2.1.1 To ensure that any reserve development meets the needs of approved use and users without significant adverse effects on other users, the reserve, or neighbours.

5.2.2 Policies

- 5.2.2.1 In evaluating any proposal for a reserve area, Council shall take regard of:
 - a. Any cultural, historical, archaeological or spiritual features of the reserve area,
 - b. the scale of the proposed facilities in terms of the reserve use, foreseeable future use, or the foreseeable demand for the particular activity; and
 - c. the materials, siting, design and colour of the proposed structure; and
 - d. the protection of existing recreation facilities, except where there displacement is in the public interest.
- 5.2.2.2 Consult with the New Zealand Historic Places Trust when any proposed development is adjacent to a recorded archaeological site.

5.3 Fences

5.3.1 Objective

5.3.1.1 To erect fences or barriers where required to ensure that the reserve can be used safely.

Rationale

Reserves adjoin a variety of land uses, private or commercial land, or other reserve or government administered land. The Fencing Act 1978 details in general principles how adjoining land occupiers share equally the cost of erecting and maintaining an adequate boundary fence. This Act also details procedures for decisions to be reached through negotiation or by District Court, as to suitable type of fence, sharing of costs and other fencing related matters.

5.3.2 Policies

5.3.2.1 Where private land directly abuts reserve land, Council will endeavour to ensure that the boundary between public and private land is clearly defined where and when required, (e.g. clearly visible boundary markers).

5.3.2.2 Council will meet its boundary fencing requirements as detailed in the Fencing Act 1978, by seeking half share costs of boundary fences.

5.3.2.3 Council and adjoining owners shall determine the type of fence appropriate in each case to the character and use of the park, generally with fences at a maximum height of 1.2 metres.

5.3.2.4 No vehicular access onto reserve land to or from private property will be permitted.

5.3.2.5 Where the fences surrounding a facility is sought by a reserve occupier, the cost of erecting and maintaining an appropriate fence to the satisfaction of the Council will be borne by the occupier.

5.4 Land, Gifts, and Commemorative Features

5.4.1 Objective

5.4.1.1 To ensure that any bequeathed land, gifts, and commemorative features are managed in a sustainable manner and are beneficial to the reserve and reserve users.

Rationale

Members of the public frequently make requests to place features on reserves. Whilst such commemorations can assist in developing community values and mark important historic events, the location and number of such features needs to be managed. Commemorative features can also add cost to the ongoing maintenance of reserves, and can cause difficulties when the features are damaged, vandalised or require significant maintenance. Difficulties can also arise where the individual or group having made the gift seeks to influence the management of the wider reserve. Council needs to be in a position to control the nature, number and location of such features; encouraging appropriate enhancement of reserves.

5.4.2 Policies

5.4.2.1 Council will consider on a case-by-case basis any requests from individuals and/or community organisations for the gifting and/or sponsorship of a reserve features.

5.4.2.2 All proposals will be assessed in relation to the following criteria:

- a. the compatibility of the proposed feature in relation to the character and use of the reserve;
- b. the benefit to the reserve users;
- c. the ease and cost of maintenance and whom is responsible;
- d. the relevance of the feature to the community and its appropriateness.

5.4.2.2 Any Council approved feature or gift may be acknowledged through the attachment of a small (eg. 250 x 100 mm) engraved or cast metal plaque associated with the feature.

5.4.2.3 Where a significant gift is involved, Council and the donor group will develop a protocol that sets out the principles of the gift.

5.4.2.4 Where a gift or commemorative feature requires removal, it may or may not be replaced. Where replacements are made they will be made with the same or a similar feature.

5.4.2.5 Council will maintain gifts and/or commemorative features except where maintenance by others is agreed as part of the gift agreement (such as in the case of some sculpture). The benefactor will generally retain no ongoing rights or responsibilities in relation to the feature.

5.5 Lighting

5.5.1 Objective

5.5.1.1 To provide lighting only where the costs of developing, maintaining and replacing this lighting is met by the beneficiaries.

Rationale

Lighting within Council reserves could be used on facilities and structures. Some of the benefits from lighting may include; security of facilities from vandalism, better surveillance of park and facilities. The provision of lighting in public places is, however, no guarantee of improved safety. Lighting should only be provided where there is clear public benefit. Council also needs to be aware of light spillage into adjoining properties (light intrusion), and glare that can affect motorists and pedestrians.

5.5.2 Policies

5.5.2.1 The Council will only fund lighting on Council reserve land where there is clear public benefit.

5.5.2.2 Where the Council owns a facility that is occupied by another group on the basis of a landlord/tenant arrangement, it is the tenants' responsibility to provide for lighting.

5.5.2.3 Where any lighting may be provided for on Council reserves it will not unduly impact on affected parties including reserve neighbours.

5.5.2.4 Lighting design should take into effect the reserve use and lighting purpose, and where possible to incorporate efficient downward lighting.

5.6 Naming of Reserves

5.6.1 Objective

5.6.1.1 To acknowledge the links of people and/or events with a place in the naming of reserves.

5.6.2 Policies

5.6.2.1 The naming of a reserve will consider the following:

- a. Any cultural, historical, or spiritual links with the area.
- b. Any known names of the area.

5.6.2.2 Council will undertake consultation with Maori and other interested parties before formal resolution by Council meeting.

5.7 Parking: Boat ramps

5.7.1 Objective

5.7.1.1 To provide safe and reasonable access to launch and retrieve trailer boats.

5.7.2 Policies

5.7.2.1 A review of the location and management requirements for boat ramps in the Coromandel & Colville areas will be undertaken in the lifetime of this plan.

5.7.2.2 Boat ramps will only be located in locations where suitable water access and the provision of adequate off road parking is available.

5.7.2.3 Where either Council or a community organisation manages a boat ramp;

- a. A fee may be charged;
- b. Where fees apply, Council will approve them.

5.8 Parking: Vehicles

5.8.1 Objective

5.8.1.1 To provide parking for vehicles and their passengers.

5.8.2 Policies

5.8.2.1 Vehicle parking will only be provided where the demand and use of a reserve area requires this facility.

5.8.2.2 Provide sufficient car and/or trailer parking to accommodate average yearly use without degrading the amenity of reserve areas.

5.9 Playgrounds

5.9.1 Objectives

- 5.9.1.1 To develop and provide for opportunities for children's play.
- 5.9.1.2 To ensure that structures meet the needs of approved use and users.

5.9.2 Policies

- 5.9.2.1 Playground equipment will be allowed only where deemed appropriate to the purpose of the reserve.
- 5.9.2.2 Playground development and structures will meet all required playground safety guidelines, regulations and have required consents.
- 5.9.2.3 The provision of play equipment or areas will accommodate a range of age groups.
- 5.9.2.4 The playground will be managed within the required service and maintenance guidelines.
- 5.9.2.5 Where possible shade will be provided in association with playground structures.

5.10 Public Toilets and Changing Facilities

5.10.1 Objective

- 5.10.1 To provide public convenience at appropriate locations where the usage warrants the facility.

5.10.2 Policy

- 5.10.2.1 Public conveniences will be provided where necessary and maintained to Council standards.

5.11 Reserve Furniture

5.11.1 Objective

5.11.1.1 To provide appropriate reserve furniture to ensure that there are adequate facilities for the public.

Rationale

Reserve furniture provides a range of opportunities and settings for users to the reserve, and enhances peoples experience by providing facilities for rest, picnicking and services (rubbish bins). It is important that the park furniture is at a level appropriate to the reserve and its purpose and use.

5.11.2 Policies

5.11.2.1 Reserve furniture may include, but is not limited to: picnic tables and seating, barbeques, rubbish bins, directional or information signage, drinking fountains, park benches.

5.11.2.2 Review the provision of reserve furniture, and provide for reasonable public use. Where new reserve furniture or signs are to be provided, their design and location should be in accordance with the Council design guidelines.

5.12 Sporting needs

5.12.1 Objective

5.12.1.1 To provide a range of sport facilities that:

- a. allows a community to participate in a variety of sporting activities
- b. considers a district wide needs basis taking into account the size of the surrounding population and district needs

5.12.2 Policies

5.12.2.1 Recreational activities, such as active sports codes and recreation activities requiring specific facilities will be grouped to maximise the sharing of facilities.

5.12.2.2 In any development of existing or future active sport or recreation facilities Council will focus public resources and spending on developing a primary active recreation venue for the community.

5.13 Utilities / Network Utility Operator

5.13.1 Objective

5.13.1.1 To minimise the impact of utilities, on the public use, enjoyment or general visual amenity of a reserve.

5.13.2 Policies

5.13.2.1 In general utilities should be located where they will not impact on the use and enjoyment or general amenity of a reserve.

5.13.2.2 Where existing utilities are to be upgraded, the utility operator will undertake early and full consultation with the Council as an affected party.

5.13.2.3 No future utilities, other than those required for the servicing of the reserve, will be located on Recreation, Scenic or Historic Reserves. Where utilities are required in any of these reserves they will be provided underground, and in such a way so as not to affect areas of cultural and archaeological significance.

5.13.2.4 All costs associated with the installation of services under or over a reserve, including costs for making good the affected area during or after construction, or any remedial work, will be borne by the utility provider.

Section 6 - Tourism and Economic Development

6.1 Promotion

6.1.1 Objective

6.1.1.1 To provide quality promotional communication for access to and information on reserves.

6.1.2 Policies

6.1.2.1 Provide signage that encourages visitors to access and use the reserves in the area.

6.1.2.2 Develop and promote coastal viewing areas.

6.1.2.3 Develop and promote linkages between reserves.

6.1.2.4 Ensure there is co-ordination between different agencies (e.g., DOC, Tourism Coromandel).

6.1.2.5 Provide signage that informs and educates the user to historic and/or cultural sites or the history of a reserve.

6.2 Signage

6.2.1 Objective

6.2.1.1 To ensure consistent sign information and minimise visual clutter on Council Reserves.

Rationale

Council bylaws and the District Plan regulate the use of advertising and hoarding signage.

6.2.2 Policies

6.2.2.1 All applications for signs on any Council reserve must be made in writing to Council.

6.2.2.2 Only signage that is related to a reserve or the use of a reserve will be allowed.

6.2.2.3 All signage must meet the requirements of the Council bylaws, the TCDC Open Spaces Sign System, the District Plan and any required resource consents.

6.2.2.4 The number of signs on Council reserves will be kept to a minimum number required to inform the reserve user.

6.2.2.5 Where possible, a reserve will have signage detailing the common name.

Section 7 - Management / Co-operation

7.1 Bylaws

7.1.1 Objective

7.1.1.1 To provide for controls and penalties for offenses on reserves.

7.1.2 Policies

7.1.2.1 Offences on reserves will be controlled by Council bylaws, and any applicable NZ Government regulation.

7.2 Encroachment

7.2.1 Objective

7.2.1.1 To prohibit the alienation of public reserve land by encroachment from adjoining properties.

Rationale

In many locations reserves abut private property, and encroachment of sheds, gardens, seating and paths has occurred such that the public are discouraged from using that portion of the reserve.

7.2.2 Policies

7.2.2.1 No encroachments onto public reserve land will be permitted.

7.2.2.2 Where encroachment occurs Council will:

- a. Give notice to the encroacher/s requiring termination and removal of the encroachment, and reinstatement of the encroached area to the satisfaction of the Council within a specified timeframe, at the owner's cost, and
- b. Where removal and reinstatement does not occur, then the Council may carry out the removal and reinstatement and recover costs by way of proceedings through the District Court or if necessary through prosecution.

7.3 Future Reserve Land Acquisition

7.3.1 Objectives

7.3.1.1 To acquire future reserves that provide for:

- a. Open public recreation space, or
- b. Linkages between reserves, or
- c. Access along stream, river and coastline margins.

Rationale:

Council needs to consider the future acquisition of reserve land whether through actual purchase, reserve contribution funding, or resource consent subdivision. As populations in many of the areas of the Coromandel Peninsula grow, particularly during the summer holiday period, the demand for publicly accessible land for walking access, sport and recreation needs increases. Many people holiday in the Coromandel region to “unwind” and recreate, thus a high demand is placed on open space for well being purposes. Acquiring future land areas and linkages will need to be continuously assessed.

7.3.2 Policies

7.3.2.1 The acquisition of open space areas for recreation and sport will be undertaken where there is a clear need for land areas to meet these future needs.

7.3.2.2 Where desirable, Council will pursue the acquisition of land to provide for linkages between reserves, for recreation and conservation purposes.

7.3.2.3 Where possible, Council will seek public access to and along stream, river and coastline margins.

7.3.2.4 Future land purchases will be assessed on:

- a. The recreation potential of the land, and
- b. Natural and cultural heritage features of the land, and
- c. How the land “fits in” with other Council reserve land areas.

7.4 Maori

7.4.1 Objective

7.4.1.1 To involve tangata whenua with mana whenua status in reserve management processes in ways which take into account the principles of the Treaty of Waitangi.

7.4.2 Policies

7.4.2.1 Developed and maintain relationships with hapu that give emphasis to:

- a. the identification, assessment and interpretation of cultural information, and
- b. identifying opportunities for involvement in the management of reserve areas, and
- c. Protection of cultural and spiritual values of reserves.

7.5 Public Involvement and Partnerships

7.5.1 Objective

7.5.1.1 To ensure that the reserves cater for the needs and values of the public in general.

7.5.2 Policies

7.5.2.1 Continue to consult and involve individuals, groups and agencies with an interest in the reserves.

7.5.2.2 Support individuals, voluntary groups and agencies, where their actions are in line with the management plan.

7.5.2.3 Improve / strengthen communication between the public and community groups, and those responsible for managing and maintaining the reserves.

7.5.2.4 Improve management partnership between TCDC and Environment Waikato to ensure clear understanding of roles and requirements.

7.6 Reserve Neighbours

7.6.1 Objectives

- 7.6.1.1 To encourage neighbours to be responsive to reserve issues.
- 7.6.1.2 To allow Council as an affected party to give approval for any adjoining proposal where there is no adverse effects on the reserve values or use.

7.6.2 Policies

- 7.6.2.1 Liaise with neighboring landowners with a view to co-operating on matters of mutual interest or benefit including:
 - a. the control of animal and plant pests;
 - b. public access;
 - c. maintenance of amenity values, landscape and vistas;
 - d. security issues; and
 - e. fire control.
- 7.6.2.2 Before giving its permission as an affected party, the Council must be satisfied that any adverse effects on a, b, c, d (below) can be avoided, remedied or mitigated.
 - a. Recreation values,
 - b. Landscape values,
 - c. Heritage values; and
 - d. Any other consideration (e.g. community values) (refer to Reserves Act 1977 Section 3 (1) v)

7.7 Safety and Risk Management

7.7.1 Objectives

- 7.7.1.1 To identify, measure and manage potential hazards in a timely manner to minimize Council exposure to complaints, compensation claims and litigation.
- 7.7.1.2 To minimise the incidence of vandalism to play equipment and other structures within the reserves.

Rationale

The regular maintenance inspections undertaken by Council or their service contractors also function as risk assessment inspections.

7.7.2 Policies

- 7.7.2.1 Continue to carry out an inspection program to identify and eliminate all potential hazards.
- 7.7.2.2 Graffiti to be removed as soon as possible.
- 7.7.2.3 Vandalised reserve infrastructure and play equipment to be repaired as soon as practicable or removed if damaged beyond repair and dangerous.

Section 8 - Monitoring of Management Plan

8.1 Management Plan Review

8.1.1 Objective

8.1.1.1 To keep this plan under continuous review in accordance with the Reserves Act 1977

8.1.2 Policies

8.1.2.1 This Plan will be reviewed every ten years. In the interim, Thames-Coromandel District Council may determine to review part of, or the entire plan, in response to:

- a. Information from monitoring which indicates the need for a review or change.
- b. The identification of new management issues or problems for which policy is required.
- c. Changes in national policy including new or amended laws, regulations or other actions.
- d. Policy changes made by Thames-Coromandel District Council.

8.1.2.2 Any review or change to this management plan will be publicly notified as detailed in Sections 41(5a) 41(6a) and 119(1c) of the Reserves Act 1977.

8.1.2.3 Any person or organisation may make a written submission within the time specified in the public notice.

8.1.2.4 Any person or organisation making a submission can request to be heard in support of their objection or comments on the Plan.

8.2 Monitoring of Management Systems

8.2.1 Objective

8.2.1.1 To review this Management Plan regularly in order to conserve, maintain and enhance the values and character of the areas Reserves.

8.2.2 Policies

8.2.2.1 Annually review the Proposed Development program component of the Individual Reserve Management Plans.

8.2.2.2 Report proposed work program to Council on the following basis;

- a. Annual maintenance programs – annually.
- b. Renewals and replacements – annually
- c. Capital works in line with the Long-term Council Community Plan – every three years.

Reserve Plans – refer to Document 2

Section 9. Individual Reserve Plans – Generic objectives and policies, and specific policies apply.

Section 10. Other Reserves – Generic objectives and policies apply.

List of reserves covered by Document 2

Area	Reserve Name	Location	Reserve Classification	Refer to Section ...
Colville	Colville Foreshore	2451 Colville Road, Colville	LPR Road	9
Colville	Otautu Bay Esplanade	285 Port Jackson Road, Colville	LPR (Esplanade)	9
Colville	Otautu Point Historic Reserve	285 Port Jackson Road, Colville	Proposed Historic	9
Colville	Whareatua Stream Esplanades	1851 Colville Road, Colville	LPR (Esplanade)	10
Colville	Wharf Road Esplanades	116 Wharf Road, Colville	LPR (Esplanade)	10
Coromandel	Admiral Arms	155 Wharf Road, Coromandel	Proposed Recreation	10
Coromandel	Albert St Esplanade	483 Albert Street, Coromandel	LPR (Esplanade)	10
Coromandel	Coromandel Harbour Esplanade	1643 SH25 Coromandel	LPR (Esplanade)	10
Coromandel	Coromandel Harbour Esplanade	SH25, Coromandel	LPR (Esplanade)	10
Coromandel	Coromandel Sports Domain	100 Pound Street, Coromandel	Proposed Recreation	9
Coromandel	Coromandel Sports Domain	210 Woollams Avenue, Coromandel2851	Proposed Recreation	9
Coromandel	Coromandel Sports Domain	320 Woollams Ave, Coromandel	Public Domain	9
Coromandel	Coromandel Sports Domain	7 Whangapoua Road, Coromandel	Recreation	9
Coromandel	Coromandel Wetland Foreshore	2500 Long Bay Road, Coromandel2851	LPR (Road)	10
Coromandel	Coromandel Wetland Reserve	2500 Long Bay Road, Coromandel	Proposed Scenic	9
Coromandel	Drinkwater Reserve	410A Buffalo Road, Coromandel	Recreation	9
Coromandel	Driving Creek Reserves	1885 Rings Road, Coromandel	LPR (Esplanade)	10
Coromandel	Driving Creek Reserves	2117 Rings Road, Coromandel	LPR (Esplanade)	10
Coromandel	Driving Creek Reserves	525A Driving Creek Road, Coromandel	Recreation	10
Coromandel	Edward Street Reserve	Edward Street, Coromandel	Recreation	9
Coromandel	Fraser Reserve	19 Colville Road, Coromandel	LPR (Roadside Rest)	9
Coromandel	Harmony Gardens	129R The 309 Road	LPR (Esplanade)	10
Coromandel	Hauraki House Reserve	230 Kapanga Road, Coromandel	Recreation	9
Coromandel	Karaka Stream Esplanade	115 Whangapoua Road, Coromandel	LPR (Esplanade)	10

Area	Reserve Name	Location	Reserve Classification	Refer to Section ...
Coromandel	Karaka Stream Esplanade	129 Whangapoua Road, Coromandel	LPR (Esplanade)	10
Coromandel	Karaka Stream Esplanade	73 Whangapoua Road/SH25, Coromandel	LPR (Accessway)	10
Coromandel	Kelso Lane Reserve	101A Kelso Lane, Coromandel	Recreation	10
Coromandel	Long Bay Domain	3100 Long Bay Road, Coromandel	Recreation	9
Coromandel	Long Bay Domain Esplanade	3155 Long Bay Rd (Glenfern), Coromandel	LPR (Accessway)	9
Coromandel	Long Bay Domain Esplanade	3155 Long Bay Road, Coromandel	LPR (Esplanade)	9
Coromandel	McGregor Bay Esplanade	1455 Long Bay Road, Coromandel	LPR (Esplanade)	9
Coromandel	Memorial Reserve	355 Kapanga Road, Coromandel	Proposed LPR – Historic	9
Coromandel	Patukirikiri Reserve	261 Wharf Road, Coromandel	Recreation	9
Coromandel	Preeces Point Esplanade	1420 Preeces Point Road, Coromandel	LPR (Esplanade)	10
Coromandel	Ruffins Rd Esplanade	400 Ruffins Road, Coromandel	LPR (Esplanade)	10
Coromandel	Te Tiki Esplanade	145 Te Tiki Street, Coromandel	LPR (Esplanade)	10
Coromandel	Whakanekeneke Stream Reserves	350 Lillis Lane, Coromandel	Recreation	10
Coromandel	Whangarahi Stream Reserves	520 Hauraki Road, Coromandel	LPR (Esplanade)	10
Coromandel	Wyuna Bay Coastal Reserves	1255 Wyuna Bay Road, Coromandel	LPR (Esplanade)	10
Coromandel	Wyuna Bay Coastal Reserves	1690 Wyuna Bay Road, Coromandel	Recreation	10
Coromandel	Wyuna Bay Coastal Reserves	1825 Wyuna Bay Road, Coromandel	LPR (Esplanade)	10
Coromandel	Wyuna Bay Coastal Reserves	2200 Wyuna Bay Road, Coromandel	Recreation	10
Coromandel	Wyuna Bay Coastal Reserves	695 Wyuna Bay Road, Coromandel	LPR (Esplanade)	10
Coromandel	Wyuna Bay Recreation Reserves	155 Woodroffe ROAD, COROMANDEL2851	Recreation	9
Coromandel	Wyuna Bay Recreation Reserves	156 Woodroffe ROAD, COROMANDEL2851	LPR (Esplanade)	9
Coromandel	Wyuna Bay Scenic Reserve	1255 Wyuna Bay Road, Coromandel	Proposed Scenic	9
Kennedy	Kennedy Bay Esplanade	1236C Kennedy Bay Road	LPR (Esplanade)	10
Kennedy	Kennedy Bay Recreation Reserve	1484 Kennedy Bay Road, Kennedy Bay	LPR (Esplanade)	10
Kennedy	Kennedy Bay Recreation Reserve	1484A Kennedy Bay Road	Recreation	10
Kikowhakarere	Kikowhakarere Bay Esplanades	24 Calloway Lane, Kikowhakarere Bay	LPR (Esplanade)	9
Kikowhakarere	Kikowhakarere Bay Esplanades	269 Colville Road, Kikowhakarere Bay	Recreation	9
Kikowhakarere	Long Bay northern esplanades	254 Colville Road, Kikowhakarere Bay	LPR (Esplanade)	9
Kikowhakarere	Long Bay northern esplanades	254 Colville Road, Kikowhakarere Bay	LPR (Accessway)	9
Little Bay	Little Bay Esplanade Reserves	59 Little Bay Drive, Little Bay	LPR (Esplanade)	9
Little Bay	Little Bay Esplanade Reserves	59 Little Bay Drive, Little Bay	LPR (Accessway)	9
Little Bay	Little Bay Recreation Reserve	44 Little Bay Drive, Little Bay	Recreation	9
Little Bay	Little Bay Recreation Reserve	59 Little Bay Drive, Little Bay	Recreation	9

Area	Reserve Name	Location	Reserve Classification	Refer to Section ...
Manaia	Mania Harbour	16 Manaia Harbour	LPR (Esplanade)	10
Manaia	Ohoni Stream Esplanade	713 SH25 - Manaia	LPR (Esplanade)	10
Manaia	Smugglers Cove	425B SH25 - Kereta	LPR (Esplanade)	10
Port Charles	Carey Road Esplanade	1478 Port Charles Road, Port Charles	LPR (Esplanade)	9
Port Charles	Carey Road Esplanade	147A Carey Road, Port Charles	LPR (Esplanade)	9
Port Charles	Carey Road Esplanade	82 Carey Road, Port Charles	LPR (Esplanade)	9
Port Charles	Carey Road Recreation Reserve	82 Carey Road, Port Charles	Recreation	9
Port Charles	Okakutahi Esplanade	1633 Port Charles Road, Port Charles	LPR (Esplanade)	9
Port Charles	Port Charles Wharf Reserve	26 Port Charles Wharf Road, Port Charles	LPR (Esplanade)	10
Port Charles	Sandy Bay Recreation Reserve	1655 Port Charles Road, Port Charles	Recreation	9
Port Charles	Stony Bay Esplanade	660 Stony Bay Road, Port Charles	LPR (Esplanade)	10
Port Charles	Waikawau River	26 Port Charles Road, Port Charles	LPR (Esplanade)	10
Port Jackson	435C Port Jackson Esplanade	435C Port Jackson Road, Port Jackson	LPR (Esplanade)	10
Te Kouma	Ariki Tahī - Sugarloaf Reserve	260 Te Kouma Road, Te Kouma	Recreation	9
Te Kouma	Kowahi Drive Reserve	18 Kowhai Drive, Te Kouma	Recreation	9
Te Kouma	Puriri Road Reserve	10 Puriri Road, Te Kouma	Recreation	9
Tuateawa	Kowhai Place	5 Kowhai Place, Tuatēawa	Recreation	9
Tuateawa	Tuateawa Esplanade Reserves	10 Rabarts Road, Tuatēawa	LPR (Esplanade)	10
Tuateawa	Tuateawa Esplanade Reserves	30 Rabarts Road, Tuatēawa	Recreation	10
Tuateawa	Tuateawa Esplanade Reserves	30 Rabarts Road, Tuatēawa	LPR (Esplanade)	10
Tuateawa	Tuateawa Reserve	420 Tuatēawa Road, Tuatēawa	Recreation	10
Tuateawa	Waihirere Accessway	104A Waihirere Drive, Tuatēawa	LPR (Accessway)	10
Waikawau	Waimanu Esplanade	76 Waimanu Road, Waikawau	LPR (Esplanade)	10
Waitete	Kauri Scenic Reserve	1610 Colville Road, Colville	Proposed Scenic	9
Waitete	Kauri Scenic Reserve	1655 Colville Road, Colville	Scenic	9
Waitete	Torehina Beach Reserve	17 Waitete Bay Road, Waitete Bay	Recreation	9
Waitete	Torehina Heights	Torehina Heights, Waitete Bay	LPR (Segregation)	10
Waitete	Waitete Stream Reserves	58 Waitete Bay Road, Waitete Bay	LPR (Esplanade)	9
Waitete	Woods Rd Sth Reserve	11 Woods Road Sth, Waitete Bay	Recreation	10

Appendix 1: Coromandel & Colville Reserve Management Plan Working Group

The following people / have been involved in the preparation of this draft Reserve Management Plan:

- Ngati Whanaunga – Betty Williams
- Tina Morgan
- Wayne Todd
- Anne Ward

Coromandel Colville Community Board

- Chris Stark
- Keith Stephenson
- Jim Mclean

Thames- Coromandel District Council

- Mike Martin – Area Manager, Thames / Coromandel
- Margaret Harrison – Area Coordinator, Coromandel
- Louie Pooley – Field Representative, Mercury Bay
- John Rich –Community Services Manager

erh Consultancy

- Eric Hamilton – Reserve plan compiler

Progressive Business Consulting Ltd

- Rose Ward – Coromandel Sports Domain concept plan

The following organisations have been involved in consultation in preparing this draft Reserve Management Plan:

- Coromandel Colville Community Board
- Department of Conservation - Peter Carter

Appendix 2: Reserve Classifications

Recreation Reserve

Purpose (s.17)

An area of land (or land and water) possessing open space, and outdoor recreational values especially suitable for recreation and sporting activities and the physical welfare and enjoyment of the public, and for the protection of the natural environment and beauty of the countryside, including recreational tracks in the countryside

Objectives of Management (s.17)

- Allow the public freedom of entry and access subject to such conditions as are necessary for the protection and well-being of the reserve and for the protection and control of the public using it
- Conserve those qualities which contribute to the pleasantness, harmony and cohesion of the natural environment and to the better use and enjoyment of the reserve Secondary
- Manage and protect scenic, historic, archaeological, biological, geological or other scientific features or indigenous flora or fauna or wildlife
- Maintain value as a soil, water and forest conservation area

Guidance for Selection

- Area may be totally modified eg suitable for sports fields
- Area may be in a partly natural conditions eg suitable for picnic or camp sites or like development
- Area may be lineal eg suitable for recreational walking and/or vehicle use

Local Purpose Reserve - LPR

Purpose (s.23)

An area of land (or land and water) suitable for a specified local educational or community purpose which does not duplicate any other reserve purpose

Objectives of Management (s.23)

- Determined by the purpose
- Prohibit access to the whole or any part of the reserve except by permit where appropriate
- Manage and protect scenic, historic, archaeological, biological or natural features
- Maintain value as a soil, water, and forest conservation area

Historic Reserve

Purpose (s.18)

An area of land (or land and water) possessing places, objects and natural features as are of historic, archaeological, cultural, educational and other special interest

Objectives of Management (s.18)

- Manage structures, objects and sites to illustrate with integrity the history of New Zealand
- Allow the public freedom of entry and access subject to such conditions and restrictions as are necessary for the protection and general well being of the reserve and for the protection and control of the public using it
- As appropriate, preserve the indigenous flora and fauna and natural environment as far as possible
- Manage and protect scenic, archaeological, geological, biological, or other scientific features, or indigenous flora and fauna, or wildlife
- Maintain value as a soil, water, and forest conservation area

Guidance for Selection

- Area should be sufficiently large to preserve all the significant historic or archaeological features associated with the place, object or natural feature

- Area should include sufficient additional land as a buffer against incompatible development or as unobtrusive sites for necessary services for management and public use
- The primary value should be traditional, historic or archaeological. through an association with major events, or Maori tradition
- Area should have immediate interest to the visitor, or be important as a key for continuing research and interpretation of New Zealand history

Scenic Reserve .A. (Natural s.19(1)(a))**Purpose (s.19(1)(a))**

Area of land (or land and water) possessing significant qualities of scenic interest or beauty or significant features or landscapes

Objectives of Management (s.19)

- Manage for their intrinsic worth and for the benefit, enjoyment and use of the public
- Preserve indigenous flora and fauna, biological associations and the natural environment as far as possible
- Exterminate exotic flora and fauna as far as possible
- Allow the public freedom of entry and access subject to conditions and restrictions necessary for the protection and well-being of the reserve and for the protection and control of the public using it
- Develop open portions for amenities and facilities where these are necessary to enable the public to obtain benefit and enjoyment from the reserve
- Manage and protect historic, archaeological, geological, biological, or other scientific features

Guidance for Selection

- Area should contain one or more natural or associated cultural or heritage features of special significance, or natural landscape of high scenic quality
- Area should be large enough to protect the integrity of the features and its immediately related surroundings

Scenic Reserve .B. (Modified s.19(1)(b))**Purpose (s.19(1)(b))**

A suitable area of land (or land and water) which by development and the introduction of flora, whether indigenous or exotic, will become of significant scenic interest or beauty

Objectives of Management (s.19)

- As appropriate to the purpose, preserve the indigenous flora and fauna, biological associations, and natural environment and beauty as far as possible
- As appropriate, exterminate exotic fauna and (to be extent consistent with purpose) exotic flora as far as possible; allow the public freedom of entry and access subject to conditions and restrictions necessary for the protection and well-being of the reserve and for the protection and control of the public using it
- Develop open portions for amenities and facilities where these are necessary to enable the public to obtain benefit and enjoyment from the reserve
- Manage and protect historic, archaeological, geological, biological or other scientific features
- Maintain value as a soil, water and forest conservation area

Guidance for Selection

- Degraded natural or semi-natural areas where the public interest warrants restoration or conversion as a scenic attraction
- Area will generally be small

Esplanade Reserve

Purpose

A fixed linear area of riverbank, lakeshore or seashore of at least three metres or greater width (usually 20m) either in a natural or modified state available primarily for conservation and public access

Objectives of Management

Primary (one or more; refer s.229 RMA)

- Maintain or enhance the natural functioning of the adjacent sea, river or lake
- Maintain or enhance aquatic habitats
- Protect associated natural values
- Mitigate natural hazards
- Enable the public access to or along any sea, river or lake

Secondary (s.23)

- Manage and protect scenic, historic, archaeological, biological or natural features
- Maintain value as a soil, water and forest conservation area

Government Purpose Reserve

Purpose (s.22)

- Area of land (or land and water) suitable for a specified government purpose.

Objectives of Management (s.22)

- Determined by purpose
- May be administered also under another Act or Acts when another Minister is appointed to control and manage
- Prohibit access to the whole or part of the reserve except by permit where appropriate
- Manage and protect scenic, historic, archaeological, biological, cultural, scientific or natural features or wildlife
- Maintain value as a soil, water and forest conservation area

National Reserve

Purpose (s.13)

An area of land (or land and water) which protects values of national or international importance

Objectives of Management (s.13)

- Provide for the application of management policies to protect the values of national or international significance and for the coordination of management with other national reserves
- Apply other management objectives according to the underlying category of the reserve

Guidance for Selection

- Area is the best example of particular national or international values
- Area may be large or small but of sufficient size to protect the integrity of the value for which it is selected
- May comprise a clustered group of areas without a single major contiguous area
- Area may contain only one or two outstanding features of specialised interest rather than a range of features of general interest

Nature Reserve

Purpose (s.20)

An area of land (or land and water) possessing indigenous flora or fauna or natural features which are of special public interest in terms of rarity, scientific interest or importance, or uniqueness

Objectives of Management (s.20)

- Preserve the area as far as possible in a natural state
- Preserve indigenous flora and fauna, ecological association and the natural environment as far as possible
- Exterminate exotic flora and fauna as far as possible
- Permit entry under controls which protect and preserve the flora and fauna in a natural state
- Manage and protect scenic historic, archaeological, biological, geological or other scientific features
- Maintain value as a soil, water and forest conservation area

Guidance for Selection

- Area should be large enough to ensure the integrity of its ecosystems and to accomplish the management objectives for which it is protected
- Area should be significantly free of direct human intervention and capable of remaining so
- Area's biodiversity should be achievable through protection and not require substantial active management or habitat manipulation

Scientific Reserve**Purpose (s.21)**

An area of land (or land and water) possessing ecological associations, plant or animal communities, types of soil, geomorphological phenomena, and like matters of special interest for scientific study, research, education and the benefit of the country

Objectives of Management (s.21)

- Preserve the indigenous flora and fauna, as far as possible
- Where appropriate manipulate the reserve (or part of it) for experimental purposes or to gain further scientific knowledge
- Where appropriate prohibit general access to the whole or part of the area and permit persons with the necessary credentials or qualifications to enter for scientific study or for control and management purposes (s.59)
- Manage and protect scenic, historic, archaeological, biological or natural features
- Maintain value as a soil, water, and forest conservation area

Guidance for Selection

- Area should be at least two-thirds in a natural condition, although it may contain limited areas of modified ecosystems
- Area should be large enough to absorb sustainable scientific and related uses without detriment to its overall long term natural values
- Area should possess features of special interest for scientific study, research, education and like uses

Wildlife Refuge or Reserve (Wildlife Act 1953; Reserves Act 1977)**Purpose**

Area of land (or land and water) which provides a haven for any classes of wildlife or possesses important wildlife habitat not otherwise protected

Objectives of Management

- Restrict and control entry and use as appropriate
- Secure and maintain wildlife habitat conditions necessary to protect the specified classes of wildlife
- Allow specific human manipulation for optimum management
- Deliver such benefits to the public as are consistent with the other objectives of management
- Facilitate scientific research and environmental monitoring associated with wildlife protection

If subject to the Reserves Act and if applicable, the reserve will also have the following secondary objectives (s.22):

- Manage and protect scenic, historic, archaeological, biological, cultural, scientific or natural features or wildlife
- Maintain value as a soil, water and forest conservation area
- Prohibit access to the whole or any part of the reserve except by permit

Guidance for Selection

- Area may be natural or have modified ecosystems
- Size of area should depend on the wildlife protection requirements and may range from relatively small to extensive

Appendix 3: TCDC Tree Strategy – Section on Tree removal

Removing and replacing trees.

Council will remove trees that meet the following criteria:

- Trees are dead, dying or seriously diseased.
- Trees are a danger to people's safety, including danger from falling limbs, and where the tree obstructs views of traffic or pedestrians.
- Trees are damaging structures or services, or endangering property.
- If the tree is a weed species or recognised as environmentally damaging
- If the tree is to be replaced by a species that contributes more positively to the tree masterplan.

Remedial measures, such as pruning or crown lifting, will be preferred to tree removal where such measures can satisfactorily overcome the issue.

Council's over-riding responsibility is to people's health and safety, and it should take all steps to reduce potential risk from trees.

Remedial measures can often solve issues. This may include removing diseased limbs, crown lifting trees to improve visibility, pruning trees to accommodate overhead wires, or bundling wires through the trees crown. These measures are preferred to removing trees, in particular where the tree has significant value.

Requests to prune or remove trees.

For safety reasons The process for dealing with requests from people to prune or remove trees is outlined as:

- Requests to prune or remove trees will be assessed in the first instance in terms of potential danger to safety or property. Where there is doubt priority will be given to health and safety.

Requests to prune or remove trees for safety reasons will be prioritised as follows:

1. Immediate Threat: Immediate or same day action will be taken where there is a significant immediate or sudden threat to safety or property.

2. Emerging Threat: Work will be carried out within one month where an emerging threat to safety or property is identified.

For other reasons Where a person requests pruning or removal of a tree for other reasons or where any threat to safety or property is minor, Council will consider the request in terms of the public value of the tree and the level of affect to the person, against the following criteria:

- Value of the tree: Council will follow the Standard Tree Evaluation Method (STEM) which considers the tree's condition (health), amenity (community benefit), and notability. Greater weight will be given to protecting trees native to the area and those that reinforce the tree masterplan, whereas weed species or those considered environmentally damaging will generally be removed.

Greater weight will be given to protecting prominent or notable trees. Greater weight will be given to protecting trees with good form and health whereas trees with poor form and poor health are more likely to be removed.

Effect on Resident: Council will consider whether any nuisance or inconvenience on an individual property is significant or minor.

- It is Council's policy to not prune or remove trees for views or minor nuisance effects such as leaf fall or bird roosting.
- However discretion may be exercised where the level of effects is great –for instance a tree completely blocks the outlook from a house, or causes severe shading, or other exceptional circumstance.

Requests to prune or remove trees for other than safety reasons will usually be programmed in to routine maintenance work.

Appendix 4: Reserves requiring classification

Under Section 14 of the Reserves Act 1977, Council has proposed the following classifications for these reserves.

Reserve Park Name	Location	Proposed Reserve Classification
Admiral Arms	155 Wharf Road, Coromandel	Recreation
Coromandel Sports Domain	240 Pound Street, Coromandel	Recreation
Coromandel Sports Domain	100 Pound Street, Coromandel	Recreation
Coromandel Sports Domain	210 Woollams Avenue, Coromandel	Recreation
Memorial Reserve	355 Kapanga Road, Coromandel	Local Purpose Reserve - Historic
Otautu Point Reserve	61 Otautu Wharf Road, Colville	Historic
Kauri Reserve	1655 Colville Road, Waitete Bay	Scenic
Wetland Reserve	2500 Long Bay Road, Coromandel	Scenic
Wyuna Bay Reserve	1255 Wyuna Bay Road, Coromandel	Scenic

Appendix 5: Revoking Reserve Classification

During the preparation of this Reserve Management Plan, Council have identified some areas of land held under the Reserves Act 1977 that do not contribute towards any current or future public outcomes or needs. Council is reviewing that the Reserve classification of these land areas to be revoked (withdrawn, cancelled), and the land to be sold.

Every person claiming to be affected by the proposed revocation, may at any time within one month of the date of the first publication of the notice of the proposal, give notice in writing of their objections to the proposed change and of the grounds thereof, to the Council for consideration.

Reserve Park Name	Location	Reserve Classification	Lot	DPS	Size (ha)
Tiki Quarry Esplanade	2590A Tiki Quarry Road, Coromandel	LPR (Esplanade)	Lot 3	DPS 63691	0.57
Tiki Quarry Esplanade	2590A Tiki Quarry Road, Coromandel	LPR (Esplanade)	Lot 4	DPS 69021	0.12
Tiki Quarry Esplanade	2590A Tiki Quarry Road, Coromandel	LPR (Esplanade)	Lot 6	DPS 69021	0.92

Appendix 6: Council Bylaws that apply to Reserves

Thames Coromandel District Council controls the management of reserves through a series of bylaws. These are as follows:

- Thames Coromandel District Council Consolidated Bylaw Part 2 Activities in public places
- Dog Control Bylaw 2004
- Thames Coromandel District Council Bylaw No.16 – General Bylaws (Parks and Reserves)

Glossary of Terms

Administering body see s.2 Reserves Act

Appointment to control and manage the appointment of an administering body for a reserve under s.28 (local authority) or s.29 (voluntary organisation) or s.30 (board) or s.35 (trustees) or s.36 (Minister of the Crown) Reserves Act or under some corresponding provision in an earlier Act. [The land remains vested in the Crown.]

Autonomous powers statutory powers held by an administering body under the Reserves Act which can be exercised by the administering body without the prior consent or approval of the Minister of Conservation

Bylaws an ordinance affecting the public, or some portion of the public, imposed under the provisions of s.106 Reserves Act and accompanied by some sanction or penalty for its non-performance (s.104 of the Act). [If validly made (s.107 and s.108 of the Act) a bylaw has the force of law within its legitimate operation.]

Certificate of title a certificate of title under the Land Transfer Act 1952 . See also s.116 Reserves Act

Change of purpose the change of purpose of a Local Purpose or Government Purpose reserve under s.24 or s.24A Reserves Act. [A change of classification would involve a change between two of the classes provided for in ss.17 to 23 of the Act.]

Change of use any change of use to which a reserve is put. [If the changed use is not consistent with the principal purpose for the class to which the reserve belongs then it would be outside the authority of the administering body to allow it. A change of purpose or classification must be considered and the use not allowed if the change is not made.]

classification putting a reserve into a class under that Act; or a scenic, or a government or local purpose reserve into a type.

Commissioner see s.2 Reserves Act

Concession see s.2 Reserves Act [Does not apply to reserves vested in an administering body.]

Consultation a process of seeking the views of an affected party, and carefully considering those views before making a decision

Council in relation to delegated and statutory powers under the Reserves Act it refers to the full Council of the local authority which is the administering body for the reserve; otherwise used to denote the Council as a corporate organisation

Delegated powers powers under the Reserves Act delegated by the Minister of Conservation under the provisions of s.10 of that Act

Discretion generally refers to the choice of approving or declining an application or proposal under the Act, or regarding the requirement of complying with specified criteria or considerations

Disposal of land in relation to a reserve means the outcome of the process in ss.24 and 25 Reserves Act, which results in the reservation being revoked and the land becoming available for disposal

District plan the purpose of the preparation, implementation and administration of district plans is to assist territorial authorities to carry out their functions in order to achieve the purpose of the RMA (s.72 RMA)

Domain board redundant term . now a reserve board or a local authority (s.16(7) Reserves Act)

Easement generally an interest in land granted under s.48 Reserves Act over a reserve or acquired under s.12 Reserves Act over private land, or similar

Esplanade reserve a type of local purpose reserve (see s.229 RMA)

Exchange an exchange of reserve land for other land (s.15 Reserves Act)

Fee simple commonly called the freehold interest in land, the highest or most absolute interest in land held under the Crown

Gazette notice a notice published in the *Gazette*. The Reserves Act requires certain transactions to be put into effect by such a notice

Government purpose Reserve a class of reserve provided for in s.22 Reserves Act

hapu sub tribe with common interest in land

he here kia mohio duty to be informed

Iwi tribe; people

kaitiakitanga the exercise of guardianship/custodianship/stewardship by the tangata whenua

kawanatanga government

koiwi bones, human remains

Lease see s.2 Reserves Act eg a lease granted under s.54 Reserves Act in respect of a recreation reserve, or a lease granted as a concession under s.59A of the Act etc

Legal description the unique description of a parcel of land given to it on a Survey Office Plan or a Deposited Plan or a Maori Land Plan . see Survey Regulations 1998. [Typically you will find these types of descriptions for reserves used in the schedule of a *Gazette* notice, a certificate of title, or on these types of plan illustrating land boundaries.]

Lessee the holder of a lease

Licence see s.2 Reserves Act eg a licence granted under s.74 to occupy a reserve temporarily, or a licence granted as a concession under s.59A of the Act, etc

Licensee the holder of a licence

Local authority see s.2 Reserves Act

Local purpose reserve a class of reserve provided for in s.23 Reserves Act

Management plan a management plan provided for in s.41 Reserves Act

Mana Maori Maori jurisdiction or authority

mana whenua iwi having authority over land

National reserve an overlay on a reserve declared under s.13 Reserves Act

Nature reserve a class of reserve provided for in s.20 Reserves Act

Objection an objection for the purposes of s.120 Reserves Act

Parcel of land an area of land with a unique legal description

Partnership (Treaty of Waitangi) see any authoritative Treaty text

Permit see s.2 Reserves Act

Public notice a notice to which s.119 or some other provision of the Reserves Act applies

Public reserve see s.2 Reserves Act

Recreation reserve a class of reserve provided for in s.17 Reserves Act

Regional Council as specified in Pt I of the First Schedule to the Local Government Act 2002, and in Pt 39A and in sections 684C to 684F, includes the Chatham Islands Council

Regional plan an operative plan (including a regional coastal plan) approved by a regional council or the Minister of Conservation under the First Schedule to the RMA, and includes all changes to such a plan

Registration the registration of an instrument under the Land Transfer Act 1952

Revocation the process of reserve revocation under s.24 Reserves Act

Right (in land) generally the same as interest in land, but could be a lesser right eg a permit.

Road reserve unformed legal road or a local purpose (road) reserve to which s.111 Reserves Act applies

Scenic reserve a class of reserve provided for in s.19 Reserves Act; there are two types

Scientific reserve a class of Reserve provided for in s.21 Reserves Act

Subdivision under s.218 RMA the term .subdivision of land. means the division of an allotment, or an application to a Registrar for the issue of a separate certificate of title in circumstances where the issue of that certificate of title is prohibited by s.226

Submission a submission for the purposes of s.120 Reserves Act

tangata whenua people of the land

taonga treasure, artifacts

Territorial authority a district or city council as specified in s.37L, Part 1 of the Local Government Act 1974; see s.2 Reserves Act

tino rangatiratanga iwi authority with control over Taonga; absolute sovereignty

Transfer (of title to land) transfer to another owner following reserve revocation; s.112 Reserves Act also applies

Trust generally used to refer to the obligations of the administering body under s.40 Reserves Act

Trustee see s.2 Reserves Act

Ultra vires outside or beyond the terms of the proper authority

Vested reserve a reserve which is vested in an administering body and not vested in the Crown. Note that land which has been declared to be a reserve (s.14 Reserves Act) or has been acquired .in trust. as a reserve, is treated as .vested. in the reserve.s administering body for the purpose of administration of the Reserves Act.

Vesting the vesting of a reserve in an administering body (s.26 or s.26A Reserves Act, where the land ceases to be vested in the Crown, or a corresponding provision in an earlier Act [but subject to s.25 Reserves Act] or under some other Act [eg on subdivision under the RMA]) and the underlying title or reversionary interest remains with the Crown.